



[Go to Product page](#)

Datasheet for ABIN6755471
anti-PYCR1 antibody (C-Term)

1 Image

Overview

Quantity:	100 µL
Target:	PYCR1
Binding Specificity:	C-Term
Reactivity:	Human, Monkey
Host:	Rabbit
Clonality:	Polyclonal
Conjugate:	This PYCR1 antibody is un-conjugated
Application:	Western Blotting (WB), Immunohistochemistry (IHC), Immunohistochemistry (Paraffin-embedded Sections) (IHC (p))

Product Details

Brand:	IHC-plus™
Immunogen:	Synthetic peptide from C-Terminus of human PYCR1 (A6NFM2, NP_722546). Percent identity by BLAST analysis: Human, Gorilla, Orangutan, Gibbon, Monkey, Marmoset (100%), Rat, Bovine, Rabbit, Guinea pig (92%), Galago, Mouse, Hamster, Elephant, Dog, Horse, Opossum, Xenopus, Smelt, Zebrafish (85%). Type of Immunogen: Synthetic peptide
Specificity:	Human PYCR1
Purification:	Immunoaffinity purified

Target Details

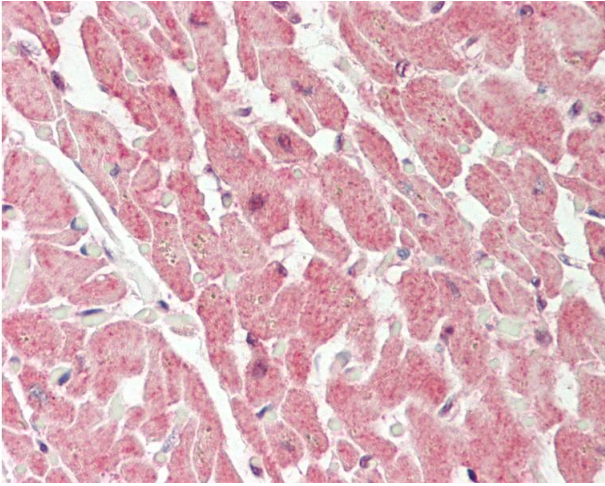
Target:	PYCR1
Alternative Name:	PYCR1 (PYCR1 Products)
Background:	Name/Gene ID: PYCR1 Synonyms: PYCR1, ARCL2B, ARCL3B, p5CR, p5CR 1, PIG45, p5C reductase 1, PP222, p5C, PRO3, PYCR
Gene ID:	5831
NCBI Accession:	NP_722546

Application Details

Application Notes:	Approved: IHC, IHC-P (10 µg/mL), WB (0.2 - 1 µg/mL) Usage: Western Blot: Suggested dilution at 1 µg/mL in 5 % skim milk / PBS buffer, and HRP conjugated anti-Rabbit IgG should be diluted in 1: 50,000 - 100,000 as secondary antibody.
Comment:	Target Species of Antibody: Human
Restrictions:	For Research Use only

Handling

Format:	Lyophilized
Reconstitution:	Distilled water
Concentration:	Lot specific
Buffer:	Lyophilized from PBS with 2 % sucrose
Handling Advice:	Avoid repeat freeze-thaw cycles.
Storage:	4 °C, -20 °C
Storage Comment:	Long term: -20°C, the use of 50% glycerol is recommended if storing aliquots in -20°C for long term use (up to 1 year) Short term (less than 1 week): 4°C. Avoid freeze-thaw cycles.



Immunohistochemistry

Image 1. Human Heart: Formalin-Fixed, Paraffin-Embedded (FFPE). This image was taken for the unconjugated form of this product. Other forms have not been tested.