

Datasheet for ABIN6755480  
**anti-HMGCS1 antibody (C-Term)**[Go to Product page](#)

## 1 Image

## Overview

|                      |  |
|----------------------|--|
| Quantity:            | 100 µL   |
| Target:              | HMGCS1   |
| Binding Specificity: | C-Term   |
| Reactivity:          | Human, Mouse, Rat, Horse, Rabbit, Cow, Dog, Guinea Pig, Pig, Hamster, Chicken, Monkey, Bat                     |
| Host:                | Rabbit   |
| Clonality:           | Polyclonal   |
| Conjugate:           | This HMGCS1 antibody is un-conjugated  |
| Application:         | Western Blotting (WB), Immunohistochemistry (IHC), Immunohistochemistry (Paraffin-embedded Sections) (IHC (p)) |

## Product Details

|               |  |
|---------------|--|
| Brand:        | IHC-plus™  |
| Immunogen:    | Synthetic peptide from C-Terminus of mouse Hmgcs1 (Q8JZK9, NP_666054). Percent identity by BLAST analysis: Human, Chimpanzee, Gorilla, Orangutan, Gibbon, Monkey, Galago, Marmoset, Mouse, Rat, Hamster, Elephant, Panda, Dog, Bovine, Bat, Rabbit, Horse, Pig, Guinea pig, Zebra finch, Chicken, Platypus, Lizard (100%), Xenopus (91%), Stickleback (84%), Pufferfish (83%).<br><br>Type of Immunogen: Synthetic peptide |
| Specificity:  | Mouse HMG-CoA Synthase / HMGCS1  |
| Purification: | Immunoaffinity purified  |

## Target Details

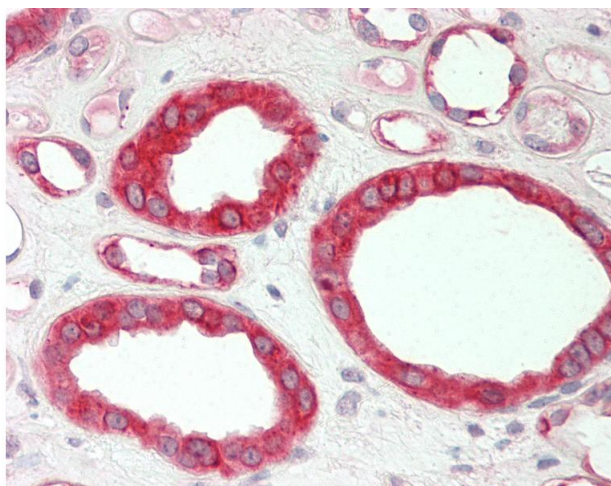
|                   |   |
|-------------------|---|
| Target:           | HMGCS1  |
| Alternative Name: | HMGCS1 / HMG-CoA Synthase 1 ( <a href="#">HMGCS1 Products</a> )       |
| Background:       | Name/Gene ID: HMGCS1<br><br>Synonyms: HMGCS1, HMG-CoA synthase, HMGCS |
| Gene ID:          | 3157  |
| NCBI Accession:   | <a href="#">NP_666054</a>   |
| Pathways:         | <a href="#">Regulation of Lipid Metabolism by PPARalpha</a>           |

## Application Details

|                    |   |
|--------------------|---|
| Application Notes: | Approved: IHC, IHC-P (10 µg/mL), WB (0.2 - 1 µg/mL) |
| Comment:           | Target Species of Antibody: Mouse                   |
| Restrictions:      | For Research Use only                               |

## Handling

|                  |   |
|------------------|---|
| Format:          | Lyophilized   |
| Reconstitution:  | Distilled water   |
| Concentration:   | Lot specific  |
| Buffer:          | Lyophilized from PBS with 2 % sucrose   |
| Handling Advice: | Avoid repeat freeze-thaw cycles.  |
| Storage:         | 4 °C, -20 °C  |
| Storage Comment: | Long term: -20°C, the use of 50% glycerol is recommended if storing aliquots in -20°C for long term use (up to 1 year)<br>Short term (less than 1 week): 4°C. Avoid freeze-thaw cycles. |



#### Immunohistochemistry

**Image 1.** Human Kidney: Formalin-Fixed, Paraffin-Embedded (FFPE). This image was taken for the unconjugated form of this product. Other forms have not been tested.