



[Go to Product page](#)

Datasheet for ABIN6755481
anti-TMEM25 antibody (AA 213-262)

1 Image

Overview

Quantity:	100 µL
Target:	TMEM25
Binding Specificity:	AA 213-262
Reactivity:	Human, Mouse
Host:	Rabbit
Clonality:	Polyclonal
Conjugate:	This TMEM25 antibody is un-conjugated
Application:	Western Blotting (WB), Immunohistochemistry (IHC), Immunohistochemistry (Paraffin-embedded Sections) (IHC (p))

Product Details

Brand:	IHC-plus™
Immunogen:	Synthetic peptide located between aa213-262 of mouse Tmem25 (Q9DCF1, NP_082141). Type of Immunogen: Synthetic peptide
Purification:	Immunoaffinity purified

Target Details

Target:	TMEM25
Alternative Name:	TMEM25 (TMEM25 Products)
Background:	Name/Gene ID: TMEM25

Target Details

Synonyms: TMEM25, Transmembrane protein 25

Gene ID: 84866

NCBI Accession: [NP_082141](#)

Application Details

Application Notes: Approved: IHC, IHC-P (10 µg/mL), WB

Comment: Target Species of Antibody: Mouse

Restrictions: For Research Use only

Handling

Format: Lyophilized

Reconstitution: Distilled water

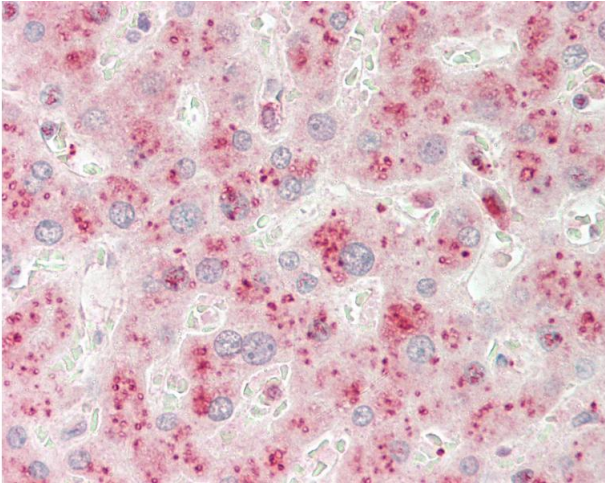
Concentration: Lot specific

Buffer: Lyophilized from PBS

Handling Advice: Avoid repeat freeze-thaw cycles.

Storage: 4 °C, -20 °C

Storage Comment: Long term: -20°C, the use of 50% glycerol is recommended if storing aliquots in -20°C for long term use (up to 1 year)
Short term (less than 1 week): 4°C. Avoid freeze-thaw cycles.



Immunohistochemistry

Image 1. Human Liver: Formalin-Fixed, Paraffin-Embedded (FFPE). This image was taken for the unconjugated form of this product. Other forms have not been tested.