

Datasheet for ABIN675563  
**anti-SCGB1A1 antibody (AA 51-96)**

## 2 Images

[Go to Product page](#)

## Overview

Quantity:	100 µL
Target:	SCGB1A1
Binding Specificity:	AA 51-96
Reactivity:	Rat
Host:	Rabbit
Clonality:	Polyclonal
Conjugate:	This SCGB1A1 antibody is un-conjugated
Application:	Western Blotting (WB), ELISA, Immunofluorescence (Cultured Cells) (IF (cc)), Immunofluorescence (Paraffin-embedded Sections) (IF (p)), Immunohistochemistry (Paraffin-embedded Sections) (IHC (p)), Immunohistochemistry (Frozen Sections) (IHC (fro))

## Product Details

Immunogen:	KLH conjugated synthetic peptide derived from mouse Uteroglobin
Isotype:	IgG
Cross-Reactivity:	Rat
Predicted Reactivity:	Mouse
Purification:	Purified by Protein A.

## Target Details

Target:	SCGB1A1
---------	---------

## Target Details

Alternative Name:	Uteroglobin ( <a href="#">SCGB1A1 Products</a> )
Background:	<p>Synonyms: Scgb1a1, secretoglobin family 1A member 1, UG, UGB, Utg, CC10, CC16, CCSP, PCB-BP, Clara cell 17 kDa protein, Clara cell phospholipid-binding prote, CCPBP, Clara cells 10 kDa secretory protein, PCB-binding protein, Urinary Protein 1, Urine Protein 1.</p> <p>Background: Uteroglobin belongs to the family of secretoglobins and is a secreted protein product of nonciliated bronchiolar Clara cells. There is convincing data suggesting it has phospholipase A2 inhibitory activity, as well as, a number of other immunomodulatory features including inhibition of interferon gamma signalling and Th1 vs. Th2 lymphocyte regulation. It was proposed as a potential peripheral marker of respiratory epithelial injury and bronchial dysfunction. Clara Cell Protein 16 concentrations have been determined in both serum and bronchoalveolar lavage fluid in numerous studies since 1994. In serum, its increase is associated with age, asbestos, nitrogen chloride and ozone exposure, sarcoidosis and high PEEP ventilation. Decreased serum CC16 levels are found after pulmonary resection, in silica-exposed workers, smokers and in asthma. Decreased CC16 concentrations were also found in the amniotic fluid of fetuses suffering from pulmonary hypoplasia caused by various mechanisms (diaphragmatic hernia, diabetic fetopathy, Turner and Down syndrome). In pleural effusions, the CC16 concentration appears to be associated with its diffusion from the lung as evidenced by high CC16 levels in cardiac pleural congestion.</p>
Gene ID:	22287
UniProt:	<a href="#">Q06318</a>

## Application Details

Application Notes:	WB 1:300-5000 ELISA 1:500-1000 IHC-P 1:200-400 IHC-F 1:100-500 IF(IHC-P) 1:50-200 IF(IHC-F) 1:50-200 IF(ICC) 1:50-200
Restrictions:	For Research Use only

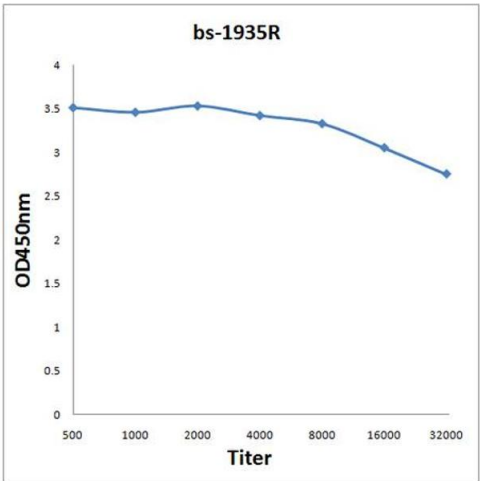
## Handling

Format:	Liquid
---------	--------

## Handling

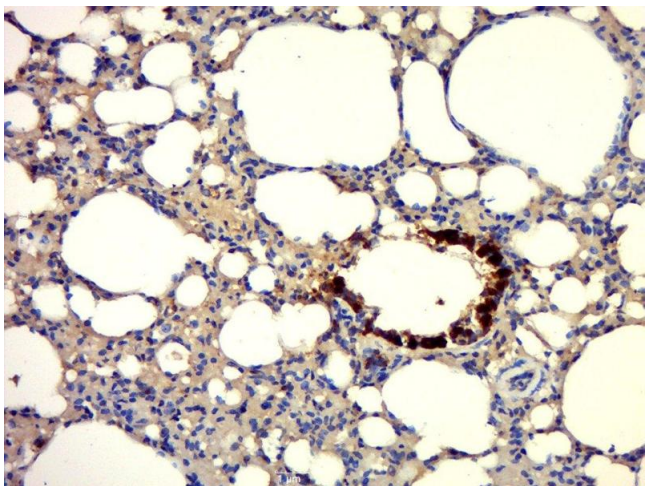
Concentration:	1 µg/µL
Buffer:	0.01M TBS( pH 7.4) with 1 % BSA, 0.02 % Proclin300 and 50 % Glycerol.
Preservative:	ProClin
Precaution of Use:	This product contains ProClin: a POISONOUS AND HAZARDOUS SUBSTANCE, which should be handled by trained staff only.
Storage:	4 °C,-20 °C
Storage Comment:	Shipped at 4°C. Store at -20°C for one year. Avoid repeated freeze/thaw cycles.
Expiry Date:	12 months

## Images



### ELISA

**Image 1.** Antigen: 0.2 µg/100 µL Primary: Antiserum, 1:500, 1:1000, 1:2000, 1:4000, 1:8000, 1:16000, 1:32000; Secondary: HRP conjugated Goat-Anti-Rabbit IgG at 1: 5000; TMB staining; Read the data in MicroplateReader by 450



### Immunohistochemistry (Paraffin-embedded Sections)

**Image 2.** Paraformaldehyde-fixed, paraffin embedded rat lung, Antigen retrieval by boiling in sodium citrate buffer (pH6.0) for 15min, Block endogenous peroxidase by 3% hydrogen peroxide for 20 minutes, Blocking buffer (normal goat serum) at 37°C for 30min, Antibody incubation with Uteroglobin Polyclonal Antibody, Unconjugated at 1:400 overnight at 4°C, followed by a conjugated secondary for 20 minutes and DAB staining.