



[Go to Product page](#)

Datasheet for ABIN6756532
anti-GRHL1 antibody (C-Term)

1 Image

Overview

Quantity:	100 µL
Target:	GRHL1
Binding Specificity:	C-Term
Reactivity:	Human, Rat, Mouse, Cow, Dog, Horse, Pig, Rabbit, Bat
Host:	Rabbit
Clonality:	Polyclonal
Conjugate:	This GRHL1 antibody is un-conjugated
Application:	Western Blotting (WB), Immunohistochemistry (Paraffin-embedded Sections) (IHC (p)), Immunohistochemistry (IHC)

Product Details

Brand:	IHC-plus™
Immunogen:	Synthetic peptide from C-Terminus of human GRHL1 (B7Z1S6). Percent identity by BLAST analysis: Human, Chimpanzee, Gorilla, Monkey, Marmoset, Mouse, Rat, Hamster, Elephant, Panda, Dog, Bovine, Bat, Rabbit, Horse, Pig (100%), Gibbon, Galago, Opossum, Guinea pig, Xenopus (92%), Turkey, Chicken, Platypus, Lizard (85%). Type of Immunogen: Synthetic peptide
Specificity:	Human GRHL1 / TFCP2L2
Purification:	Immunoaffinity purified

Target Details

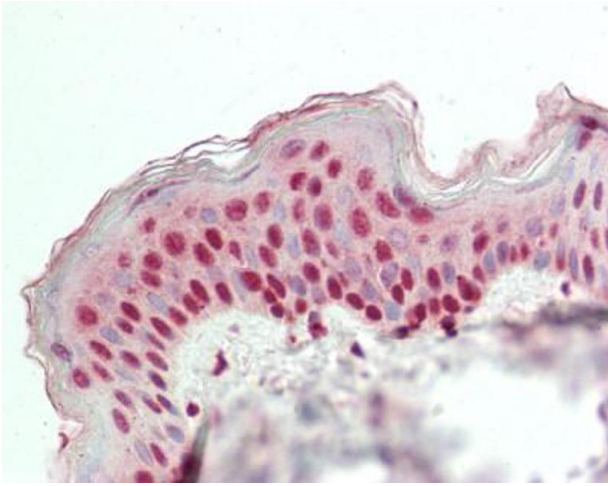
Target:	GRHL1
Alternative Name:	GRHL1 / TFCP2L2 (GRHL1 Products)
Background:	Name/Gene ID: GRHL1 Synonyms: GRHL1, Grainyhead-like 1 (Drosophila), MGR, NH32, LBP-32, TFCP2L2, Mammalian grainyhead, Transcription factor LBP-32, LBP protein 32, LBP32
Gene ID:	29841
Pathways:	Regulation of Lipid Metabolism by PPARalpha

Application Details

Application Notes:	Approved: IHC, IHC-P (5 µg/mL), WB (1 µg/mL)
Comment:	Target Species of Antibody: Human
Restrictions:	For Research Use only

Handling

Format:	Lyophilized
Reconstitution:	Distilled water
Concentration:	Lot specific
Buffer:	Lyophilized from PBS, 2 % sucrose.
Handling Advice:	Avoid repeat freeze-thaw cycles.
Storage:	4 °C, -20 °C
Storage Comment:	Long term: -20°C, the use of 50% glycerol is recommended if storing aliquots in -20°C for long term use (up to 1 year) Short term (less than 1 week): 4°C. Avoid freeze-thaw cycles.



Immunohistochemistry (Paraffin-embedded Sections)

Image 1. Human Skin: Formalin-Fixed, Paraffin-Embedded (FFPE). This image was taken for the unconjugated form of this product. Other forms have not been tested.