

Datasheet for ABIN6756544
anti-CSTF2 antibody (AA 182-231)[Go to Product page](#)

1 Image

Overview

Quantity:	100 µL
Target:	CSTF2
Binding Specificity:	AA 182-231
Reactivity:	Human, Monkey
Host:	Rabbit
Clonality:	Polyclonal
Conjugate:	This CSTF2 antibody is un-conjugated
Application:	Western Blotting (WB), Immunohistochemistry (IHC), Immunohistochemistry (Paraffin-embedded Sections) (IHC (p))

Product Details

Brand:	IHC-plus™
Immunogen:	Synthetic peptide located between aa182-231 of human CSTF2 (P33240, NP_001316). Percent identity by BLAST analysis: Human, Chimpanzee, Gorilla, Orangutan, Gibbon, Monkey, Galago, Marmoset, Rabbit (100%), Mouse, Rat, Horse, Guinea pig (85%), Dog, Bovine (84%). Type of Immunogen: Synthetic peptide
Isotype:	IgG
Specificity:	Human CSTF2
Purification:	Immunoaffinity purified

Target Details

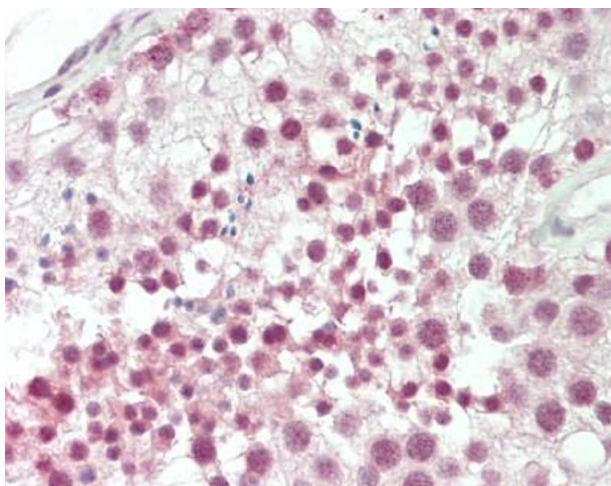
Target:	CSTF2
Alternative Name:	CSTF2 / CstF-64 (CSTF2 Products)
Background:	Name/Gene ID: CSTF2 Synonyms: CSTF2, BetaCstF-64 variant 2, CstF-64, CSTF 64 kDa subunit, CF-1 64 kDa subunit
Gene ID:	1478
NCBI Accession:	NP_001316

Application Details

Application Notes:	Approved: IHC, IHC-P (10 µg/mL), WB (0.2 - 1 µg/mL) Usage: ELISA titer using peptide based assay: 1:62500. Western Blot: Suggested dilution at 1 µg/mL in 5 % skim milk / PBS buffer, and HRP conjugated anti-Rabbit IgG should be diluted in 1:50000 - 100000 as second antibody.
Comment:	Target Species of Antibody: Human
Restrictions:	For Research Use only

Handling

Format:	Lyophilized
Reconstitution:	Distilled Water.
Concentration:	Lot specific
Buffer:	Lyophilized from PBS with 2 % sucrose
Handling Advice:	Avoid repeat freeze-thaw cycles.
Storage:	4 °C, -20 °C
Storage Comment:	Long term: -20°C, the use of 50% glycerol is recommended if storing aliquots in -20°C for long term use (up to 1 year) Short term (less than 1 week): 4°C. Avoid freeze-thaw cycles.



Immunohistochemistry (Paraffin-embedded Sections)

Image 1. Human Testis: Formalin-Fixed, Paraffin-Embedded (FFPE). This image was taken for the unconjugated form of this product. Other forms have not been tested.