



[Go to Product page](#)

Datasheet for ABIN6756552  
**anti-BRD9 antibody (AA 51-100)**

1 Image

Overview

Quantity:	100 µL
Target:	BRD9
Binding Specificity:	AA 51-100
Reactivity:	Human, Mouse, Rat, Dog, Cow, Guinea Pig, Horse, Rabbit, Monkey, Bat, Pig
Host:	Rabbit
Clonality:	Polyclonal
Conjugate:	This BRD9 antibody is un-conjugated
Application:	Western Blotting (WB), Immunohistochemistry (IHC), Immunohistochemistry (Paraffin-embedded Sections) (IHC (p))

Product Details

Brand:	IHC-plus™
Immunogen:	Synthetic peptide located between aa51-100 of human BRD9 (Q9H8M2, NP_076413). Percent identity by BLAST analysis: Human, Chimpanzee, Gorilla, Orangutan, Gibbon, Baboon, Monkey, Galago, Mouse, Rat, Shrew, Panda, Dog, Bovine, Bat, Rabbit, Horse, Pig, Opossum, Guinea pig, Armadillo (100%), Hamster, Drosophila, Nematode, Grape, Chaetomium (91%), Salpingoeca (90%), Salmon (85%), Sea anemone, Neurospora, Toxoplasma, Ajellomyces (84%), Tick (83%), Turkey, Chicken, Platypus, Xenopus (80%).  Type of Immunogen: Synthetic peptide
Specificity:	Human BRD9

## Product Details

---

Purification: Immunoaffinity purified

## Target Details

---

Target: BRD9

Alternative Name: BRD9 ([BRD9 Products](#))

Background: Name/Gene ID: BRD9

Synonyms: BRD9, Bromodomain containing 9, PRO9856, Sarcoma antigen NY-SAR-29, LAVS3040

Gene ID: 65980

NCBI Accession: [NP\\_076413](#)

## Application Details

---

Application Notes: Approved: IHC, IHC-P (10 µg/mL), WB (1 µg/mL)

Comment: Target Species of Antibody: Human

Restrictions: For Research Use only

## Handling

---

Format: Lyophilized

Reconstitution: Distilled water

Concentration: Lot specific

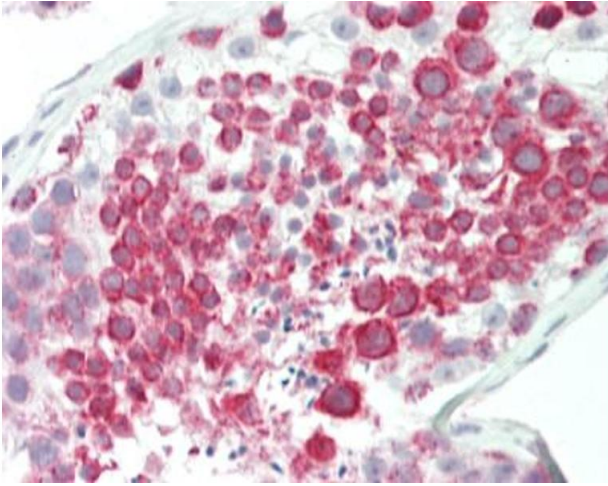
Buffer: Lyophilized from PBS, 2 % sucrose.

Handling Advice: Avoid repeat freeze-thaw cycles.

Storage: 4 °C, -20 °C

Storage Comment: Long term: -20°C, the use of 50% glycerol is recommended if storing aliquots in -20°C for long term use (up to 1 year)

Short term (less than 1 week): 4°C. Avoid freeze-thaw cycles.



#### Immunohistochemistry (Paraffin-embedded Sections)

**Image 1.** Human Testis: Formalin-Fixed, Paraffin-Embedded (FFPE). This image was taken for the unconjugated form of this product. Other forms have not been tested.