

Datasheet for ABIN6756554  
**anti-F13B antibody (AA 216-265)**



[Go to Product page](#)

1 Image

## Overview

Quantity:	100 µL
Target:	F13B
Binding Specificity:	AA 216-265
Reactivity:	Human, Mouse, Rat, Cow, Guinea Pig, Monkey
Host:	Rabbit
Clonality:	Polyclonal
Conjugate:	This F13B antibody is un-conjugated
Application:	Western Blotting (WB), Immunohistochemistry (IHC), Immunohistochemistry (Paraffin-embedded Sections) (IHC (p))

## Product Details

Brand:	IHC-plus™
Immunogen:	Synthetic peptide located between aa216-265 of human F13B (P05160, NP_001985). Percent identity by BLAST analysis: Human, Chimpanzee, Gorilla, Monkey, Galago, Marmoset, Mouse, Rat, Elephant, Bovine, Guinea pig (100%), Gibbon, Rabbit, Horse (92%), Dog, Bat (85%).  Type of Immunogen: Synthetic peptide
Isotype:	IgG
Specificity:	Human F13B / Factor XIIIb
Purification:	Immunoaffinity purified

## Target Details

---

Target: F13B

Alternative Name: F13B / TGase ([F13B Products](#))

Background: Name/Gene ID: F13B

Synonyms: F13B, Transglutaminase B chain, FXIIIB, TGASE

Gene ID: 2165

NCBI Accession: [NP\\_001985](#)

## Application Details

---

Application Notes: Approved: IHC, IHC-P (10 µg/mL), WB (0.2 - 1 µg/mL)

Usage: Western Blot: Suggested dilution at 1 µg/mL in 5 % skim milk / PBS buffer, and HRP conjugated anti-Rabbit IgG should be diluted in 1: 50,000 - 100,000 as second antibody. ELISA titer in peptide based assay: 1:62500.

Comment: Target Species of Antibody: Human

Restrictions: For Research Use only

## Handling

---

Format: Lyophilized

Reconstitution: Distilled water

Concentration: Lot specific

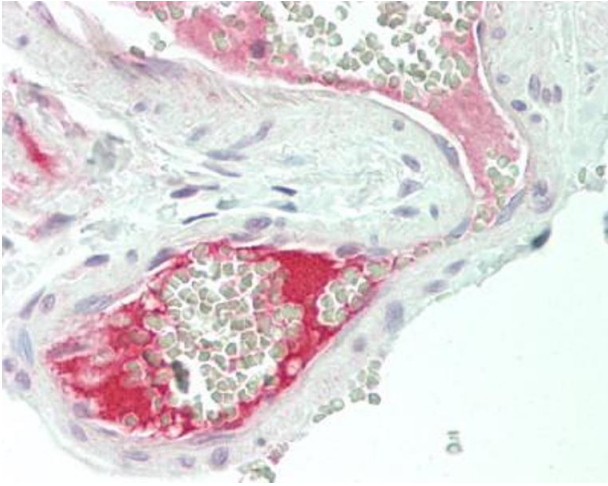
Buffer: Lyophilized from PBS with 2 % sucrose

Handling Advice: Avoid repeat freeze-thaw cycles.

Storage: 4 °C, -20 °C

Storage Comment: Long term: -20°C, the use of 50% glycerol is recommended if storing aliquots in -20°C for long term use (up to 1 year)

Short term (less than 1 week): 4°C. Avoid freeze-thaw cycles.



#### Immunohistochemistry (Paraffin-embedded Sections)

**Image 1.** Human Colon, Vessel: Formalin-Fixed, Paraffin-Embedded (FFPE). This image was taken for the unconjugated form of this product. Other forms have not been tested.