



[Go to Product page](#)

Datasheet for ABIN6756561
anti-RNF11 antibody (AA 75-124)

1 Image

Overview

Quantity:	100 µL
Target:	RNF11
Binding Specificity:	AA 75-124
Reactivity:	Human, Mouse, Rat, Cow, Guinea Pig, Hamster, Monkey, Pig, Rabbit, Bat, Chicken, Dog, Horse, Xenopus laevis
Host:	Rabbit
Clonality:	Polyclonal
Conjugate:	This RNF11 antibody is un-conjugated
Application:	Western Blotting (WB), Immunohistochemistry (IHC), Immunohistochemistry (Paraffin-embedded Sections) (IHC (p))

Product Details

Brand:	IHC-plus™
Immunogen:	Synthetic peptide located between aa75-124 of rat Rnf11l. Percent identity by BLAST analysis: Human, Gorilla, Gibbon, Monkey, Marmoset, Mouse, Rat, Hamster, Elephant, Dog, Bovine, Bat, Rabbit, Horse, Pig, Opossum, Guinea pig, Turkey, Zebra finch, Chicken, Platypus, Lizard, Xenopus (100%). Type of Immunogen: Synthetic peptide
Specificity:	Rat RNF11
Purification:	Immunoaffinity purified

Target Details

Target: RNF11

Alternative Name: RNF11 ([RNF11 Products](#))

Background: Name/Gene ID: RNF11

Synonyms: RNF11, CGI-123, Ring finger protein 11, SID1669, Sid1669p

Gene ID: 26994

Application Details

Application Notes: Approved: IHC, IHC-P (10 µg/mL), WB (1 µg/mL)

Comment: Target Species of Antibody: Rat

Restrictions: For Research Use only

Handling

Format: Lyophilized

Reconstitution: Distilled water

Concentration: Lot specific

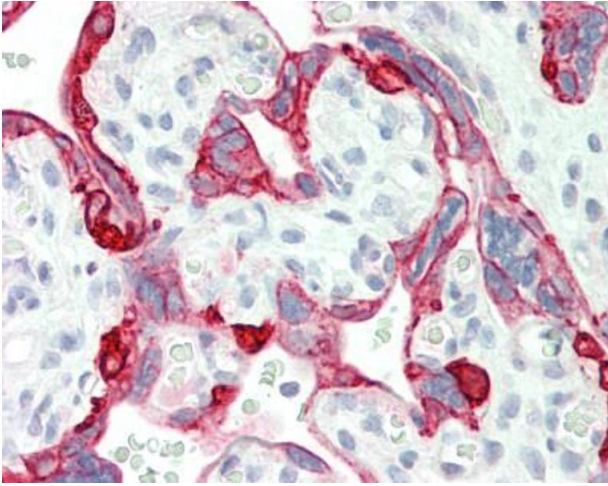
Buffer: Lyophilized from PBS with 2 % sucrose

Handling Advice: Avoid repeat freeze-thaw cycles.

Storage: 4 °C, -20 °C

Storage Comment: Long term: -20°C, the use of 50% glycerol is recommended if storing aliquots in -20°C for long term use (up to 1 year)

Short term (less than 1 week): 4°C. Avoid freeze-thaw cycles.



Immunohistochemistry (Paraffin-embedded Sections)

Image 1. Human Placenta: Formalin-Fixed, Paraffin-Embedded (FFPE). This image was taken for the unconjugated form of this product. Other forms have not been tested.