



[Go to Product page](#)

Datasheet for ABIN6756563  
**anti-DLG2 antibody (N-Term)**

1 Image

Overview

Quantity:	100 µL
Target:	DLG2
Binding Specificity:	N-Term
Reactivity:	Human, Rat, Mouse, Guinea Pig, Monkey
Host:	Rabbit
Clonality:	Polyclonal
Conjugate:	This DLG2 antibody is un-conjugated
Application:	Western Blotting (WB), Immunohistochemistry (IHC), Immunohistochemistry (Paraffin-embedded Sections) (IHC (p))

Product Details

Brand:	IHC-plus™
Immunogen:	Synthetic peptide from N-Terminus of human DLG2 (Q15700, NP_001355). Percent identity by BLAST analysis: Human, Monkey, Galago, Mouse, Rat, Guinea pig (100%).  Type of Immunogen: Synthetic peptide
Isotype:	IgG
Specificity:	Human DLG2 / PSD93
Purification:	Immunoaffinity purified

## Target Details

---

Target:	DLG2
Alternative Name:	DLG2 / PSD93 ( <a href="#">DLG2 Products</a> )
Background:	Name/Gene ID: DLG2 Family: MAGUK  Synonyms: DLG2, Chapsyn-110, Disks large homolog 2, PPP1R58, PSD-93, PSD93
Gene ID:	1740
NCBI Accession:	<a href="#">NP_001355</a>

## Application Details

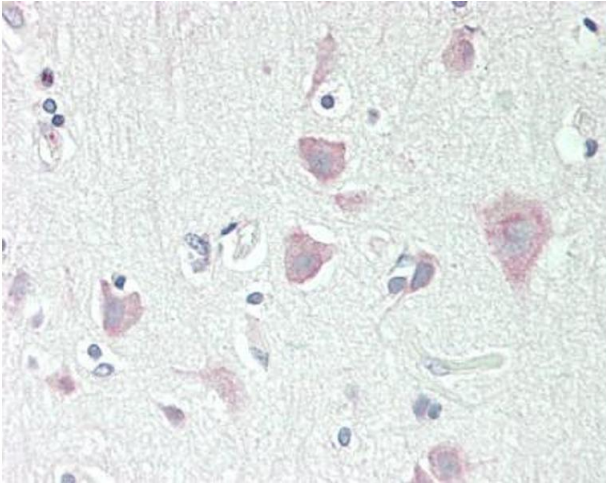
---

Application Notes:	Approved: IHC, IHC-P (10 µg/mL), WB (0.2 - 1 µg/mL)
Comment:	Target Species of Antibody: Human
Restrictions:	For Research Use only

## Handling

---

Format:	Lyophilized
Reconstitution:	After adding water, will consist of PBS buffer with 2 % sucrose
Concentration:	Lot specific
Buffer:	Lyophilized from PBS with 2 % sucrose
Handling Advice:	Avoid repeat freeze-thaw cycles.
Storage:	4 °C, -20 °C
Storage Comment:	Long term: -20°C, the use of 50% glycerol is recommended if storing aliquots in -20°C for long term use (up to 1 year) Short term (less than 1 week): 4°C. Avoid freeze-thaw cycles.



#### Immunohistochemistry (Paraffin-embedded Sections)

**Image 1.** Human Brain, Cortex: Formalin-Fixed, Paraffin-Embedded (FFPE). This image was taken for the unconjugated form of this product. Other forms have not been tested.