

Datasheet for ABIN6756564

**anti-Solute Carrier Family 17 (Acidic Sugar Transporter),  
Member 5 (SLC17A5) (AA 151-200) antibody**



[Go to Product page](#)

1 Image

## Overview

Quantity:	100 µL
Target:	Solute Carrier Family 17 (Acidic Sugar Transporter), Member 5 (SLC17A5)
Binding Specificity:	AA 151-200
Reactivity:	Human, Mouse, Rat, Rabbit, Cow, Dog, Guinea Pig, Horse, Monkey, Xenopus laevis, Bat, Chicken, Hamster
Host:	Rabbit
Clonality:	Polyclonal
Conjugate:	Un-conjugated
Application:	Western Blotting (WB), Immunohistochemistry (IHC), Immunohistochemistry (Paraffin-embedded Sections) (IHC (p))

## Product Details

Brand:	IHC-plus™
Immunogen:	<p>Synthetic peptide located between aa151-200 of human SLC17A5 (Q9NRA2, NP_036566). Percent identity by BLAST analysis: Human, Chimpanzee, Gorilla, Gibbon, Baboon, Monkey, Galago, Marmoset, Mouse, Rat, Hamster, Panda, Dog, Bovine, Bat, Rabbit, Horse, Opossum, Guinea pig, Turkey, Zebra finch, Chicken, Platypus, Xenopus (100%), Sheep, Elephant (92%), Salmon (85%), Stickleback (84%).</p> <p>Type of Immunogen: Synthetic peptide</p>
Isotype:	IgG

## Product Details

Specificity:	Human SLC17A5
Purification:	Immunoaffinity purified

## Target Details

Target:	Solute Carrier Family 17 (Acidic Sugar Transporter), Member 5 (SLC17A5)
Alternative Name:	SLC17A5 ( <a href="#">SLC17A5 Products</a> )
Background:	Name/Gene ID: SLC17A5 Subfamily: Lysosomal sialate transporter Family: Transporter  Synonyms: SLC17A5, AST, Membrane glycoprotein HP59, SD, Sialin, SIASD, NSD, Sialic acid storage disease, SLD, ISSD
Gene ID:	26503
NCBI Accession:	<a href="#">NP_036566</a>

## Application Details

Application Notes:	Approved: IHC, IHC-P (10 µg/mL), WB (0.5 µg/mL)  Usage: ELISA titer using peptide based assay: 1:1562500. Western Blot: Suggested dilution at 0.5 µg/mL in 5 % skim milk / PBS buffer, and HRP conjugated anti-Rabbit IgG should be diluted in 1:50000 - 100000 as second antibody.
Comment:	Target Species of Antibody: Human
Restrictions:	For Research Use only

## Handling

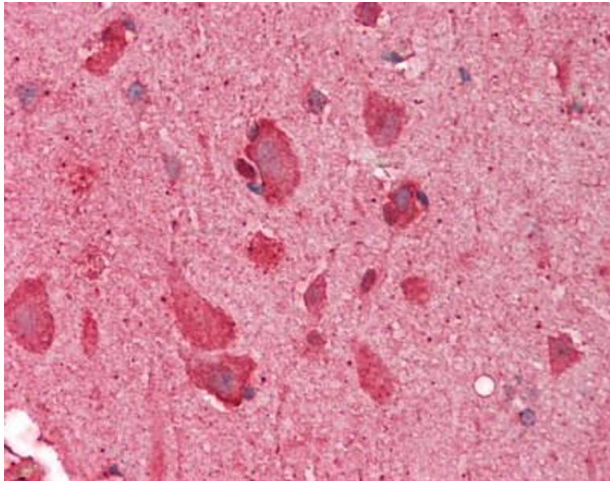
Format:	Lyophilized
Reconstitution:	Distilled Water.
Concentration:	Lot specific
Buffer:	Lyophilized from PBS with 2 % sucrose
Handling Advice:	Avoid repeat freeze-thaw cycles.

## Handling

Storage: 4 °C, -20 °C

Storage Comment: Long term: -20°C, the use of 50% glycerol is recommended if storing aliquots in -20°C for long term use (up to 1 year)  
Short term (less than 1 week): 4°C. Avoid freeze-thaw cycles.

## Images



### Immunohistochemistry (Paraffin-embedded Sections)

**Image 1.** Human Brain, Cortex: Formalin-Fixed, Paraffin-Embedded (FFPE). This image was taken for the unconjugated form of this product. Other forms have not been tested.