

Datasheet for ABIN6756567  
**anti-AREL1 antibody (AA 179-228)**



[Go to Product page](#)

1 Image

## Overview

Quantity:	100 µL
Target:	AREL1
Binding Specificity:	AA 179-228
Reactivity:	Human, Mouse, Rat, Cow, Dog, Guinea Pig, Horse, Rabbit, Chicken, Monkey
Host:	Rabbit
Clonality:	Polyclonal
Conjugate:	This AREL1 antibody is un-conjugated
Application:	Western Blotting (WB), Immunohistochemistry (IHC), Immunohistochemistry (Paraffin-embedded Sections) (IHC (p))

## Product Details

Brand:	IHC-plus™
Immunogen:	<p>Synthetic peptide located between aa179-228 of human AREL1 (O15033, NP_001034568).  Percent identity by BLAST analysis: Human, Chimpanzee, Gorilla, Gibbon, Monkey, Galago, Marmoset, Mouse, Rat, Elephant, Dog, Bovine, Rabbit, Horse, Opossum, Guinea pig, Turkey, Chicken, Platypus, Lizard (100%), Zebra finch (92%), Zebrafish (84%).</p> <p>Type of Immunogen: Synthetic peptide</p>
Specificity:	Human KIAA0317
Purification:	Immunoaffinity purified

## Target Details

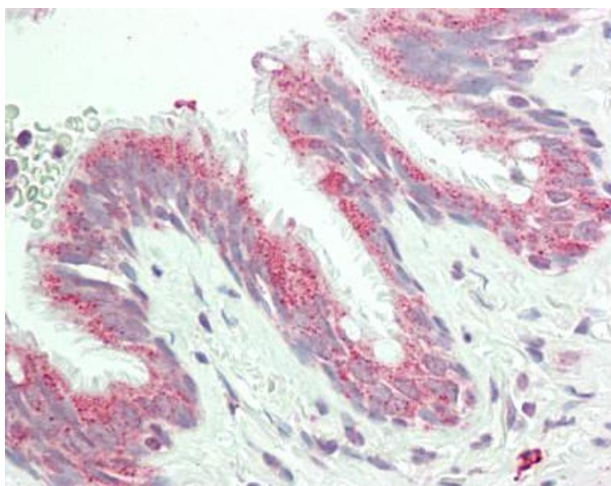
Target:	AREL1
Alternative Name:	AREL1 / KIAA0317 ( <a href="#">AREL1 Products</a> )
Background:	Name/Gene ID: AREL1  Synonyms: AREL1, KIAA0317, Protein KIAA0317
Gene ID:	9870
NCBI Accession:	<a href="#">NP_001034568</a>

## Application Details

Application Notes:	Approved: IHC, IHC-P (10 µg/mL), WB (0.2 - 1 µg/mL)  Usage: Western Blot: Suggested dilution at 1 µg/mL in 5 % skim milk / PBS buffer, and HRP conjugated anti-Rabbit IgG should be diluted in 1: 50,000 - 100,000 as secondary antibody.
Comment:	Target Species of Antibody: Human
Restrictions:	For Research Use only

## Handling

Format:	Lyophilized
Reconstitution:	Distilled water
Concentration:	Lot specific
Buffer:	Lyophilized from PBS with 2 % sucrose
Handling Advice:	Avoid repeat freeze-thaw cycles.
Storage:	4 °C,-20 °C
Storage Comment:	Long term: -20°C, the use of 50% glycerol is recommended if storing aliquots in -20°C for long term use (up to 1 year)  Short term (less than 1 week): 4°C. Avoid freeze-thaw cycles.



#### Immunohistochemistry (Paraffin-embedded Sections)

**Image 1.** Human Lung: Formalin-Fixed, Paraffin-Embedded (FFPE). This image was taken for the unconjugated form of this product. Other forms have not been tested.