



[Go to Product page](#)

Datasheet for ABIN6756570
anti-PSAT1 antibody (AA 99-148)

1 Image

Overview

| | |
|----------------------|--|
| Quantity: | 100 µL |
| Target: | PSAT1 |
| Binding Specificity: | AA 99-148 |
| Reactivity: | Human, Mouse, Rat, Dog, Rabbit, Cow, Guinea Pig, Horse, Monkey, Pig |
| Host: | Rabbit |
| Clonality: | Polyclonal |
| Conjugate: | This PSAT1 antibody is un-conjugated |
| Application: | Western Blotting (WB), Immunohistochemistry (IHC), Immunohistochemistry (Paraffin-embedded Sections) (IHC (p)) |

Product Details

| | |
|---------------|--|
| Brand: | IHC-plus™ |
| Immunogen: | Synthetic peptide located between aa99-148 of human PSAT1 (Q9Y617, NP_478059). Percent identity by BLAST analysis: Human, Chimpanzee, Gorilla, Gibbon, Galago, Marmoset, Mouse, Rat, Elephant, Dog, Bovine, Rabbit, Horse, Pig, Guinea pig (100%), Panda, Bat, Platypus, Lizard, Xenopus, Smelt, Stickleback (92%), Zebra finch, Zebrafish (85%), Opossum (84%). Type of Immunogen: Synthetic peptide |
| Isotype: | IgG |
| Specificity: | Human PSAT1 |
| Purification: | Immunoaffinity purified |

Target Details

Target: PSAT1

Alternative Name: PSAT1 ([PSAT1 Products](#))

Background: Name/Gene ID: PSAT1

Synonyms: PSAT1, EPIP, Phosphoserine aminotransferase, PSA, PSAT

Gene ID: 29968

NCBI Accession: [NP_478059](#)

Pathways: [Warburg Effect](#)

Application Details

Application Notes: Approved: IHC, IHC-P (10 µg/mL), WB (1 µg/mL)

Usage: ELISA titer using peptide based assay: 1:1562500. Western Blot: Suggested dilution at 1.0 µg/mL in 5 % skim milk / PBS buffer, and HRP conjugated anti-Rabbit IgG should be diluted in 1:50000 - 100000 as second antibody.

Comment: Target Species of Antibody: Human

Restrictions: For Research Use only

Handling

Format: Lyophilized

Reconstitution: Distilled Water.

Concentration: Lot specific

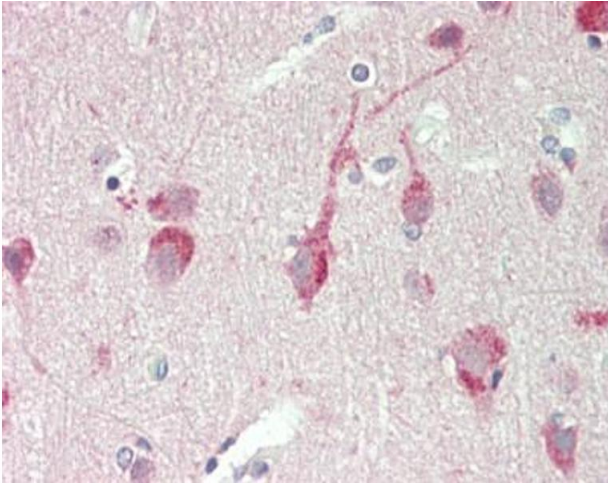
Buffer: Lyophilized from PBS with 2 % sucrose

Handling Advice: Avoid repeat freeze-thaw cycles.

Storage: 4 °C, -20 °C

Storage Comment: Long term: -20°C, the use of 50% glycerol is recommended if storing aliquots in -20°C for long term use (up to 1 year)

Short term (less than 1 week): 4°C. Avoid freeze-thaw cycles.



Immunohistochemistry (Paraffin-embedded Sections)

Image 1. Human Brain, Cortex: Formalin-Fixed, Paraffin-Embedded (FFPE). This image was taken for the unconjugated form of this product. Other forms have not been tested.