



[Go to Product page](#)

Datasheet for ABIN6756572
anti-ST3GAL4 antibody (AA 171-220)

1 Image

Overview

Quantity:	100 µL
Target:	ST3GAL4
Binding Specificity:	AA 171-220
Reactivity:	Human, Rat, Mouse, Dog, Horse, Bat, Hamster
Host:	Rabbit
Clonality:	Polyclonal
Conjugate:	This ST3GAL4 antibody is un-conjugated
Application:	Western Blotting (WB), Immunohistochemistry (IHC), Immunohistochemistry (Paraffin-embedded Sections) (IHC (p))

Product Details

Brand:	IHC-plus™
Immunogen:	Synthetic peptide located between aa171-220 of human ST3GAL4 (Q6IBE6, NP_006269). Percent identity by BLAST analysis: Human, Chimpanzee, Gorilla, Orangutan, Gibbon, Galago, Mouse, Rat, Hamster, Elephant, Panda, Dog, Bat, Horse (100%), Marmoset, Sheep, Bovine, Rabbit, Pig (92%), Guinea pig, Turkey, Zebra finch, Chicken (85%). Type of Immunogen: Synthetic peptide
Isotype:	IgG
Specificity:	Human ST3GAL4
Purification:	Immunoaffinity purified

Target Details

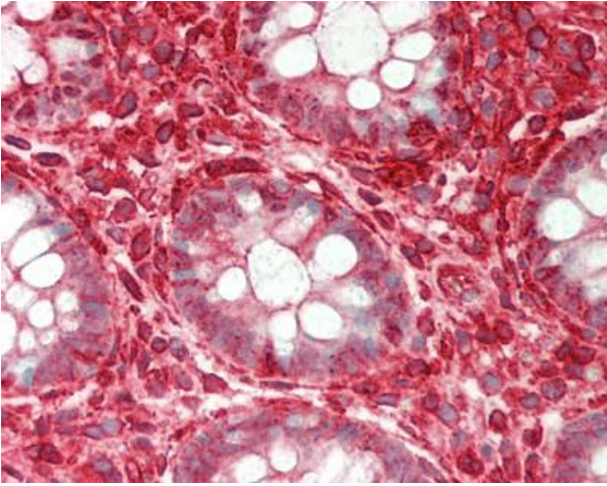
Target:	ST3GAL4
Alternative Name:	ST3GAL4 / ST3Gal IV (ST3GAL4 Products)
Background:	Name/Gene ID: ST3GAL4 Synonyms: ST3GAL4, Alpha 2,3-ST 4, CGS23, Gal-NAc6S, NANTA3, Alpha 2,3-sialyltransferase IV, SAT-3, SAT3, SIAT4-C, Sialyltransferase 4C, ST-4, ST3Gal IV, SIAT4, SIAT4C, ST3GalA.2, ST3GalIV, STZ
Gene ID:	6484
NCBI Accession:	NP_006269
Pathways:	Glycosaminoglycan Metabolic Process

Application Details

Application Notes:	Approved: IHC, IHC-P (5 µg/mL), WB (0.25 µg/mL) Usage: ELISA titer using peptide based assay: 1:312500. Western Blot: Suggested dilution at 0.25 µg/mL in 5 % skim milk / PBS buffer, and HRP conjugated anti-Rabbit IgG should be diluted in 1:50000 - 100000 as second antibody.
Comment:	Target Species of Antibody: Human
Restrictions:	For Research Use only

Handling

Format:	Lyophilized
Reconstitution:	Distilled Water.
Concentration:	Lot specific
Buffer:	Lyophilized from PBS with 2 % sucrose
Handling Advice:	Avoid repeat freeze-thaw cycles.
Storage:	4 °C, -20 °C
Storage Comment:	Long term: -20°C, the use of 50% glycerol is recommended if storing aliquots in -20°C for long term use (up to 1 year) Short term (less than 1 week): 4°C. Avoid freeze-thaw cycles.



Immunohistochemistry (Paraffin-embedded Sections)

Image 1. Human Colon: Formalin-Fixed, Paraffin-Embedded (FFPE). This image was taken for the unconjugated form of this product. Other forms have not been tested.