



[Go to Product page](#)

Datasheet for ABIN6756576
anti-SV2A antibody (AA 501-550)

1 Image

Overview

Quantity:	100 µL
Target:	SV2A
Binding Specificity:	AA 501-550
Reactivity:	Human, Rat, Mouse, Dog, Cow, Pig, Horse, Rabbit, Guinea Pig, Monkey, Bat, Hamster
Host:	Rabbit
Clonality:	Polyclonal
Conjugate:	This SV2A antibody is un-conjugated
Application:	Western Blotting (WB), Immunohistochemistry (IHC), Immunohistochemistry (Paraffin-embedded Sections) (IHC (p))

Product Details

Brand:	IHC-plus™
Immunogen:	Synthetic peptide located between aa501-550 of human SV2A (Q7L0J3, NP_055664). Percent identity by BLAST analysis: Human, Gorilla, Gibbon, Monkey, Galago, Marmoset, Mouse, Rat, Hamster, Elephant, Panda, Dog, Bovine, Bat, Rabbit, Horse, Pig, Opossum, Guinea pig (100%), Orangutan (92%), Chicken (84%). Type of Immunogen: Synthetic peptide
Isotype:	IgG
Specificity:	Human SV2A
Purification:	Immunoaffinity purified

Target Details

Target: SV2A

Alternative Name: SV2A / SV ([SV2A Products](#))

Background: Name/Gene ID: SV2A
Subfamily: Synaptic vesicle neurotransmitter transporter
Family: Transporter

Synonyms: SV2A, KIAA0736, SV2, Synaptic vesicle protein 2A

Gene ID: 9900

NCBI Accession: [NP_055664](#)

Application Details

Application Notes: Approved: IHC, IHC-P (10 µg/mL), WB (10 µg/mL)

Usage: ELISA titer using peptide based assay: 1:62500. Western Blot: Suggested dilution at 0.5 µg/mL in 5 % skim milk / PBS buffer, and HRP conjugated anti-Rabbit IgG should be diluted in 1:50000 - 100000 as second antibody.

Comment: Target Species of Antibody: Human

Restrictions: For Research Use only

Handling

Format: Lyophilized

Reconstitution: Distilled Water.

Concentration: Lot specific

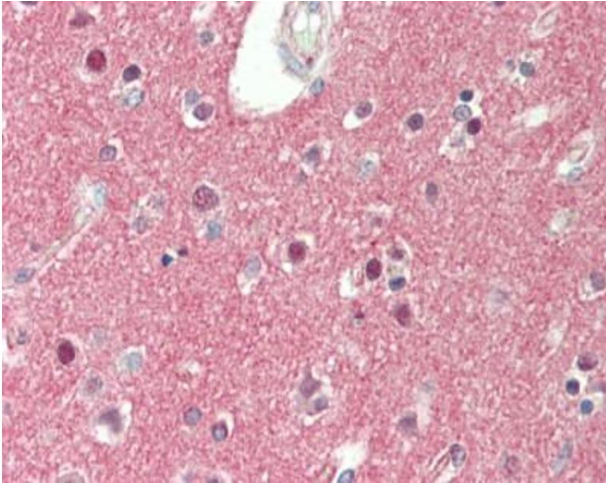
Buffer: Lyophilized from PBS with 2 % sucrose

Handling Advice: Avoid repeat freeze-thaw cycles.

Storage: 4 °C, -20 °C

Storage Comment: Long term: -20°C, the use of 50% glycerol is recommended if storing aliquots in -20°C for long term use (up to 1 year)

Short term (less than 1 week): 4°C. Avoid freeze-thaw cycles.



Immunohistochemistry (Paraffin-embedded Sections)

Image 1. Human Brain, Cortex: Formalin-Fixed, Paraffin-Embedded (FFPE). This image was taken for the unconjugated form of this product. Other forms have not been tested.