



[Go to Product page](#)

Datasheet for ABIN6756582  
**anti-WNK3 antibody (AA 431-480)**

1 Image

### Overview

Quantity:	100 µL
Target:	WNK3
Binding Specificity:	AA 431-480
Reactivity:	Human, Mouse, Rabbit, Cow, Dog, Guinea Pig, Horse, Bat, Monkey, Pig
Host:	Rabbit
Clonality:	Polyclonal
Conjugate:	This WNK3 antibody is un-conjugated
Application:	Immunohistochemistry (IHC), Western Blotting (WB), Immunohistochemistry (Paraffin-embedded Sections) (IHC (p))

### Product Details

Brand:	IHC-plus™
Immunogen:	Synthetic peptide located between aa431-480 of human WNK3 (Q9BYP7, NP_001002838). Percent identity by BLAST analysis: Human, Chimpanzee, Gorilla, Gibbon, Monkey, Galago, Marmoset, Mouse, Elephant, Panda, Dog, Bovine, Bat, Rabbit, Horse, Pig, Guinea pig, Platypus (100%), Rat, Opossum, Turkey, Zebra finch, Chicken (92%), Lizard, Xenopus, Stickleback, Zebrafish (85%).  Type of Immunogen: Synthetic peptide
Isotype:	IgG
Specificity:	Human WNK3

## Product Details

---

Purification: Immunoaffinity purified

## Target Details

---

Target: WNK3

Alternative Name: WNK3 / PRKWNK3 ([WNK3 Products](#))

Background: Name/Gene ID: WNK3  
Subfamily: WNK  
Family: Protein Kinase

Synonyms: WNK3, KIAA1566, PRKWNK3

Gene ID: 65267

NCBI Accession: [NP\\_001002838](#)

## Application Details

---

Application Notes: Approved: IHC, IHC-P (10 µg/mL), WB (0.2 - 1 µg/mL)

Usage: Western Blot: Suggested dilution at 1 µg/mL in 5 % skim milk / PBS buffer, and HRP conjugated anti-Rabbit IgG should be diluted in 1: 50,000 - 100,000 as second antibody. ELISA titer in peptide based assay: 1:2500.

Comment: Target Species of Antibody: Human

Restrictions: For Research Use only

## Handling

---

Format: Lyophilized

Reconstitution: Distilled water

Concentration: Lot specific

Buffer: Lyophilized from PBS with 2 % sucrose

Handling Advice: Avoid repeat freeze-thaw cycles.

Storage: 4 °C, -20 °C

Storage Comment: Long term: -20°C, the use of 50% glycerol is recommended if storing aliquots in -20°C for long

## Handling

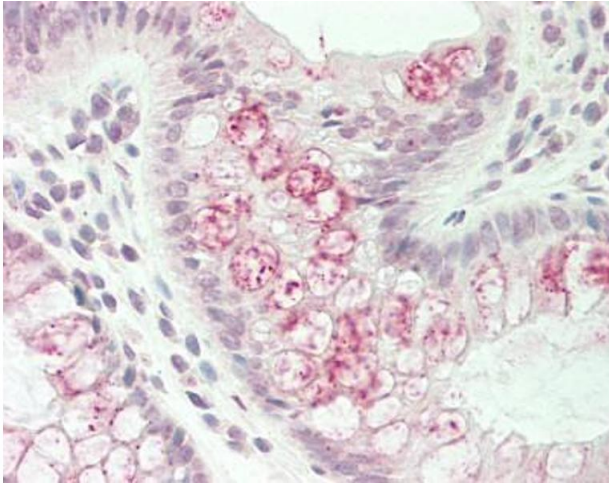
---

term use (up to 1 year)

Short term (less than 1 week): 4°C. Avoid freeze-thaw cycles.

## Images

---



### Immunohistochemistry (Paraffin-embedded Sections)

**Image 1.** Human Colon: Formalin-Fixed, Paraffin-Embedded (FFPE). This image was taken for the unconjugated form of this product. Other forms have not been tested.