



[Go to Product page](#)

Datasheet for ABIN6756588
anti-Spindlin 1 antibody (AA 179-228)

1 Image

Overview

Quantity:	100 µL
Target:	Spindlin 1 (SPIN1)
Binding Specificity:	AA 179-228
Reactivity:	Human, Mouse, Rat, Pig, Rabbit, Cow, Dog, Chicken, Monkey, Guinea Pig, Zebrafish (Danio rerio), Xenopus laevis, Bat
Host:	Rabbit
Clonality:	Polyclonal
Conjugate:	This Spindlin 1 antibody is un-conjugated
Application:	Western Blotting (WB), Immunohistochemistry (IHC), Immunohistochemistry (Paraffin-embedded Sections) (IHC (p))

Product Details

Brand:	IHC-plus™
Immunogen:	Synthetic peptide located between aa179-228 of human SPIN1 (Q9Y657, NP_006708). Percent identity by BLAST analysis: Human, Chimpanzee, Gorilla, Orangutan, Gibbon, Monkey, Galago, Marmoset, Mouse, Rat, Elephant, Panda, Dog, Bovine, Bat, Rabbit, Pig, Opossum, Guinea pig, Zebra finch, Chicken, Lizard, Xenopus, Salmon, Zebrafish (100%), Horse (84%). Type of Immunogen: Synthetic peptide
Specificity:	Human SPIN1 / SPIN
Purification:	Immunoaffinity purified

Target Details

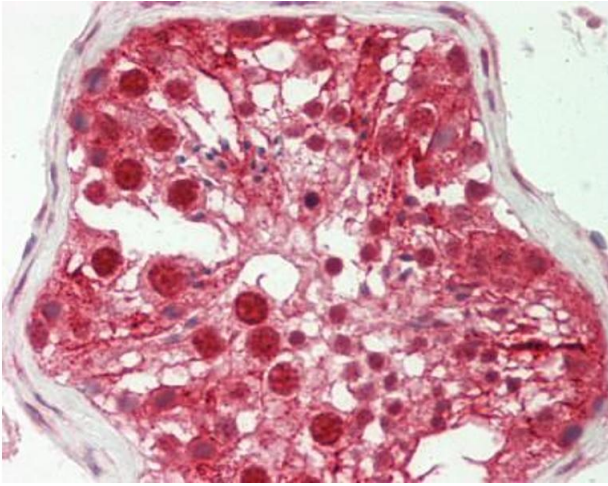
Target:	Spindlin 1 (SPIN1)
Alternative Name:	SPIN / SPIN1 (SPIN1 Products)
Background:	Name/Gene ID: SPIN1 Synonyms: SPIN1, OCR, Ovarian cancer-related protein, Spindlin-1, SPIN, Spindlin, Spindlin 1
Gene ID:	10927
NCBI Accession:	NP_006708

Application Details

Application Notes:	Approved: IHC, IHC-P (10 µg/mL), WB (0.2 - 1 µg/mL) Usage: Western Blot: Suggested dilution at 1 µg/mL in 5 % skim milk / PBS buffer, and HRP conjugated anti-Rabbit IgG should be diluted in 1: 50,000 - 100,000 as secondary antibody.
Comment:	Target Species of Antibody: Human
Restrictions:	For Research Use only

Handling

Format:	Lyophilized
Reconstitution:	Reconstitute with 50 µL sterile ddH2O.
Concentration:	Lot specific
Buffer:	Lyophilized from PBS with 2 % sucrose
Handling Advice:	Avoid repeat freeze-thaw cycles.
Storage:	4 °C, -20 °C
Storage Comment:	Long term: -20°C, the use of 50% glycerol is recommended if storing aliquots in -20°C for long term use (up to 1 year) Short term (less than 1 week): 4°C. Avoid freeze-thaw cycles.



Immunohistochemistry (Paraffin-embedded Sections)

Image 1. Human Testis: Formalin-Fixed, Paraffin-Embedded (FFPE). This image was taken for the unconjugated form of this product. Other forms have not been tested.