

Datasheet for ABIN6756591 anti-GBP2 antibody (AA 74-123)



[Go to Product page](#)

1 Image

Overview

Quantity:	100 µL
Target:	GBP2
Binding Specificity:	AA 74-123
Reactivity:	Human
Host:	Rabbit
Clonality:	Polyclonal
Conjugate:	This GBP2 antibody is un-conjugated
Application:	Western Blotting (WB), Immunohistochemistry (IHC), Immunohistochemistry (Paraffin-embedded Sections) (IHC (p))

Product Details

Brand:	IHC-plus™
Immunogen:	Synthetic peptide located between aa74-123 of human GBP2 (P32456, NP_004111). Percent identity by BLAST analysis: Human, Chimpanzee, Gorilla, Monkey, Marmoset (100%), Orangutan, Gibbon, Galago, Elephant, Bovine, Horse, Pig, Guinea pig, Xenopus (85%), Rat, Hamster, Opossum, Platypus (84%), Mouse (78%). Type of Immunogen: Synthetic peptide
Isotype:	IgG
Specificity:	Human GBP2
Purification:	Immunoaffinity purified

Target Details

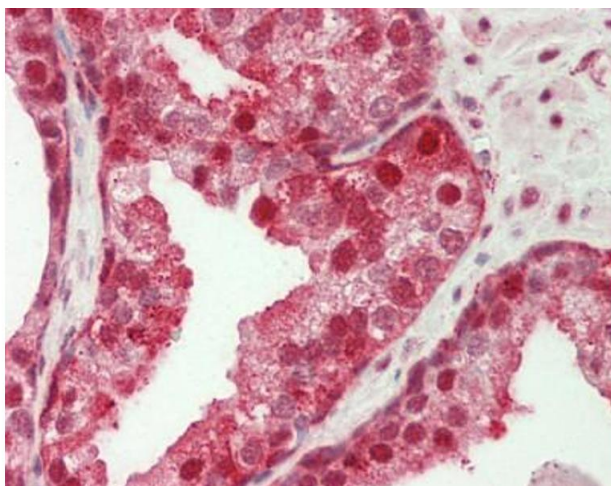
Target:	GBP2
Alternative Name:	GBP2 (GBP2 Products)
Background:	Name/Gene ID: GBP2 Synonyms: GBP2, GBP-2, HuGBP-2, Guanylate binding protein 2, GTP-binding protein 2
Gene ID:	2634
NCBI Accession:	NP_004111
Pathways:	Cellular Response to Molecule of Bacterial Origin

Application Details

Application Notes:	Approved: IHC, IHC-P (10 µg/mL), WB (0.2 - 1 µg/mL) Usage: ELISA titer using peptide based assay: 1:312500. Western Blot: Suggested dilution at 1 µg/mL in 5 % skim milk / PBS buffer, and HRP conjugated anti-Rabbit IgG should be diluted in 1:50000 - 100000 as second antibody.
Comment:	Target Species of Antibody: Human
Restrictions:	For Research Use only

Handling

Format:	Lyophilized
Reconstitution:	Distilled Water.
Concentration:	Lot specific
Buffer:	Lyophilized from PBS with 2 % sucrose
Handling Advice:	Avoid repeat freeze-thaw cycles.
Storage:	4 °C, -20 °C
Storage Comment:	Long term: -20°C, the use of 50% glycerol is recommended if storing aliquots in -20°C for long term use (up to 1 year) Short term (less than 1 week): 4°C. Avoid freeze-thaw cycles.



Immunohistochemistry (Paraffin-embedded Sections)

Image 1. Human Prostate: Formalin-Fixed, Paraffin-Embedded (FFPE). This image was taken for the unconjugated form of this product. Other forms have not been tested.