

Datasheet for ABIN6756592  
**anti-GRF2 antibody (AA 866-915)**[Go to Product page](#)

## 1 Image

## Overview

Quantity:	100 µL
Target:	GRF2 (RAPGEF1)
Binding Specificity:	AA 866-915
Reactivity:	Human, Mouse, Dog, Monkey, Cow, Guinea Pig, Horse, Pig, Xenopus laevis, Bat, Chicken
Host:	Rabbit
Clonality:	Polyclonal
Conjugate:	This GRF2 antibody is un-conjugated
Application:	Western Blotting (WB), Immunohistochemistry (IHC), Immunohistochemistry (Paraffin-embedded Sections) (IHC (p))

## Product Details

Brand:	IHC-plus™
Immunogen:	Synthetic peptide located between aa866-915 of human RAPGEF1 (Q13905, NP_005303). Percent identity by BLAST analysis: Human, Chimpanzee, Gorilla, Gibbon, Monkey, Galago, Marmoset, Mouse, Elephant, Panda, Dog, Bovine, Bat, Horse, Pig, Opossum, Guinea pig, Turkey, Zebra finch, Chicken, Platypus, Xenopus, Stickleback (100%), Rat (93%).  Type of Immunogen: Synthetic peptide
Isotype:	IgG
Specificity:	Human RAPGEF1
Purification:	Immunoaffinity purified

## Target Details

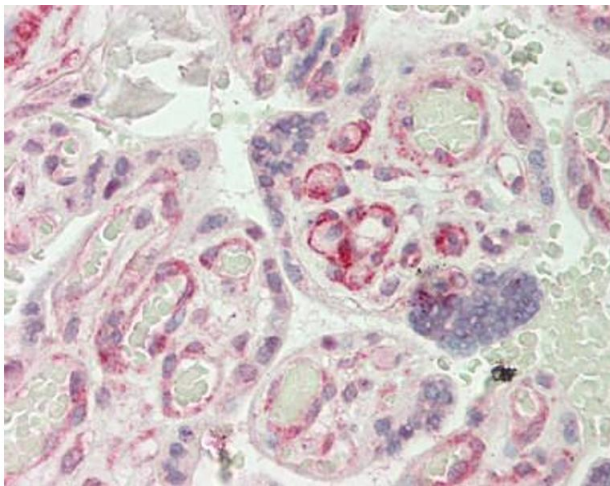
Target:	GRF2 (RAPGEF1)
Alternative Name:	RAPGEF1 ( <a href="#">RAPGEF1 Products</a> )
Background:	Name/Gene ID: RAPGEF1  Synonyms: RAPGEF1, C3G, CRK SH3-binding GNRP, GRF2, Protein C3G
Gene ID:	2889
NCBI Accession:	<a href="#">NP_005303</a>
Pathways:	<a href="#">Interferon-gamma Pathway</a> , <a href="#">Neurotrophin Signaling Pathway</a> , <a href="#">Platelet-derived growth Factor Receptor Signaling</a> , <a href="#">Signaling of Hepatocyte Growth Factor Receptor</a>

## Application Details

Application Notes:	Approved: IHC, IHC-P (10 µg/mL), WB (0.2 - 1 µg/mL)  Usage: ELISA titer using peptide based assay: 1:312500. Western Blot: Suggested dilution at 1 µg/mL in 5 % skim milk / PBS buffer, and HRP conjugated anti-Rabbit IgG should be diluted in 1:50000 - 100000 as second antibody.
Comment:	Target Species of Antibody: Human
Restrictions:	For Research Use only

## Handling

Format:	Lyophilized
Reconstitution:	Distilled Water.
Concentration:	Lot specific
Buffer:	Lyophilized from PBS with 2 % sucrose
Handling Advice:	Avoid repeat freeze-thaw cycles.
Storage:	4 °C,-20 °C
Storage Comment:	Long term: -20°C, the use of 50% glycerol is recommended if storing aliquots in -20°C for long term use (up to 1 year)  Short term (less than 1 week): 4°C. Avoid freeze-thaw cycles.



#### Immunohistochemistry (Paraffin-embedded Sections)

**Image 1.** Human Placenta: Formalin-Fixed, Paraffin-Embedded (FFPE). This image was taken for the unconjugated form of this product. Other forms have not been tested.