

Datasheet for ABIN6756593
anti-SFRS7 antibody (N-Term)[Go to Product page](#)

1 Image

Overview

Quantity:	100 µL
Target:	SFRS7
Binding Specificity:	N-Term
Reactivity:	Human, Mouse, Rat, Cow, Guinea Pig, Horse, Rabbit, Zebrafish (Danio rerio), Monkey, Chicken, Pig, Xenopus laevis
Host:	Rabbit
Clonality:	Polyclonal
Conjugate:	This SFRS7 antibody is un-conjugated
Application:	Western Blotting (WB), Immunohistochemistry (IHC), Immunohistochemistry (Paraffin-embedded Sections) (IHC (p))

Product Details

Brand:	IHC-plus™
Immunogen:	Synthetic peptide from N-Terminus of human SRSF7 (Q16629, NP_001026854). Percent identity by BLAST analysis: Human, Chimpanzee, Gorilla, Gibbon, Monkey, Galago, Marmoset, Mouse, Rat, Elephant, Bovine, Rabbit, Horse, Pig, Opossum, Guinea pig, Turkey, Zebra finch, Chicken, Platypus, Lizard, Xenopus, Salmon, Zebrafish (100%). Type of Immunogen: Synthetic peptide
Specificity:	Human SRSF7 / SFRS7
Purification:	Immunoaffinity purified

Target Details

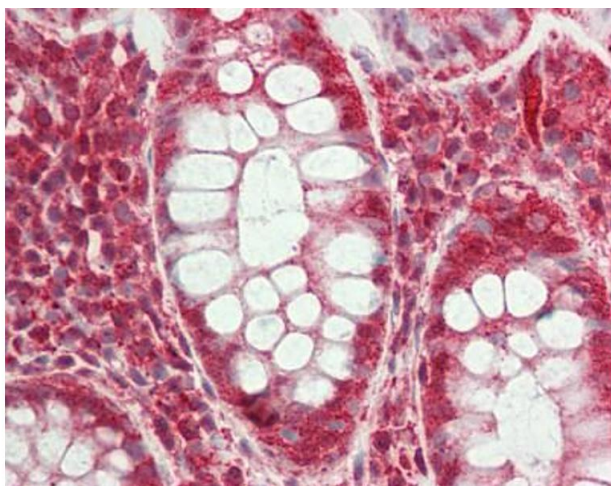
Target:	SFRS7
Alternative Name:	SFRS7 / 9G8 (SFRS7 Products)
Background:	Name/Gene ID: SRSF7 Synonyms: SRSF7, 9G8, Aging-associated protein 3, AAG3, Splicing factor 9G8, RBM37, SFRS7, ZCCHC20, ZCRB2, HSSG1, SR splicing factor 7
Gene ID:	6432
NCBI Accession:	NP_001026854

Application Details

Application Notes:	Approved: IHC, IHC-P (5 µg/mL), WB (0.2 - 1 µg/mL) Usage: Western Blot: Suggested dilution at 1 µg/mL in 5 % skim milk / PBS buffer, and HRP conjugated anti-Rabbit IgG should be diluted in 1: 50,000 - 100,000 as secondary antibody.
Comment:	Target Species of Antibody: Human
Restrictions:	For Research Use only

Handling

Format:	Lyophilized
Reconstitution:	Distilled water
Concentration:	Lot specific
Buffer:	Lyophilized from PBS with 2 % sucrose
Handling Advice:	Avoid repeat freeze-thaw cycles.
Storage:	4 °C, -20 °C
Storage Comment:	Long term: -20°C, the use of 50% glycerol is recommended if storing aliquots in -20°C for long term use (up to 1 year) Short term (less than 1 week): 4°C. Avoid freeze-thaw cycles.



Immunohistochemistry (Paraffin-embedded Sections)

Image 1. Human Colon: Formalin-Fixed, Paraffin-Embedded (FFPE). This image was taken for the unconjugated form of this product. Other forms have not been tested.