



[Go to Product page](#)

Datasheet for ABIN6756595
anti-PHKG1 antibody (AA 68-117)

1 Image

Overview

Quantity:	100 µL
Target:	PHKG1
Binding Specificity:	AA 68-117
Reactivity:	Human, Mouse, Rat, Horse, Rabbit, Cow, Dog, Hamster, Monkey
Host:	Rabbit
Clonality:	Polyclonal
Conjugate:	This PHKG1 antibody is un-conjugated
Application:	Western Blotting (WB), Immunohistochemistry (IHC), Immunohistochemistry (Paraffin-embedded Sections) (IHC (p))

Product Details

Brand:	IHC-plus™
Immunogen:	Synthetic peptide located between aa68-117 of rat Phkg1 (P13286, NP_113761). Percent identity by BLAST analysis: Human, Gorilla, Gibbon, Monkey, Galago, Mouse, Rat, Hamster, Elephant, Dog, Bovine, Rabbit, Horse (100%), Panda, Opossum (92%), Guinea pig (85%), Bat (84%), Turkey, Zebra finch, Chicken, Xenopus, Stickleback, Grape (83%). Type of Immunogen: Synthetic peptide
Specificity:	Rat PHKG1
Purification:	Immunoaffinity purified

Target Details

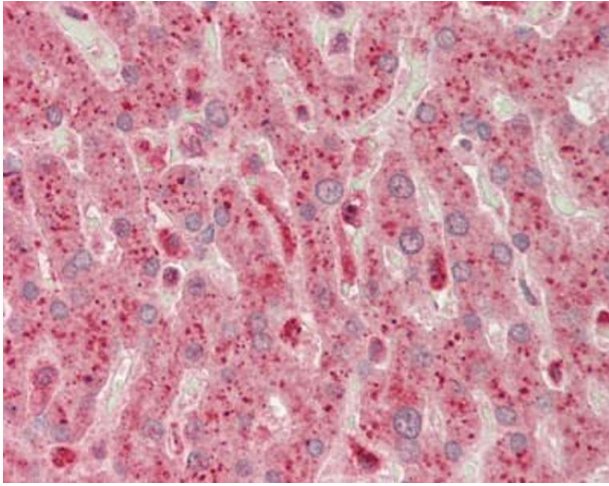
Target:	PHKG1
Alternative Name:	PHKG1 (PHKG1 Products)
Background:	Name/Gene ID: PHKG1 Subfamily: PHK Family: Protein Kinase Synonyms: PHKG1, Phosphorylase kinase gamma, Phosphorylase kinase, gamma 1, PHKG
Gene ID:	5260
NCBI Accession:	NP_113761
Pathways:	Cellular Glucan Metabolic Process

Application Details

Application Notes:	Approved: IHC, IHC-P (10 µg/mL), WB (1 µg/mL) Usage: Western Blot: Suggested dilution at 1 µg/mL in 5 % skim milk / PBS buffer, and HRP conjugated anti-Rabbit IgG should be diluted in 1: 50,000 - 100,000 as secondary antibody.
Comment:	Target Species of Antibody: Rat
Restrictions:	For Research Use only

Handling

Format:	Lyophilized
Reconstitution:	Reconstitute with 50 µL sterile ddH ₂ O.
Concentration:	Lot specific
Buffer:	Lyophilized from PBS with 2 % sucrose
Handling Advice:	Avoid repeat freeze-thaw cycles.
Storage:	4 °C, -20 °C
Storage Comment:	Long term: -20°C, the use of 50% glycerol is recommended if storing aliquots in -20°C for long term use (up to 1 year) Short term (less than 1 week): 4°C. Avoid freeze-thaw cycles.



Immunohistochemistry (Paraffin-embedded Sections)

Image 1. Human Liver: Formalin-Fixed, Paraffin-Embedded (FFPE). This image was taken for the unconjugated form of this product. Other forms have not been tested.