



[Go to Product page](#)

Datasheet for ABIN6756597
anti-RIOK2 antibody (AA 107-156)

1 Image

Overview

Quantity:	100 µL
Target:	RIOK2
Binding Specificity:	AA 107-156
Reactivity:	Human, Mouse, Rabbit, Cow, Dog, Rat, Guinea Pig, Horse, Monkey, Zebrafish (Danio rerio), Bat, Xenopus laevis, Pig
Host:	Rabbit
Clonality:	Polyclonal
Conjugate:	This RIOK2 antibody is un-conjugated
Application:	Western Blotting (WB), Immunohistochemistry (IHC), Immunohistochemistry (Paraffin-embedded Sections) (IHC (p))

Product Details

Brand:	IHC-plus™
Immunogen:	Synthetic peptide located between aa107-156 of human RIOK2 (Q9BVS4, NP_060813). Percent identity by BLAST analysis: Human, Chimpanzee, Gorilla, Gibbon, Monkey, Galago, Marmoset, Mouse, Rat, Elephant, Panda, Dog, Bovine, Bat, Rabbit, Horse, Pig, Opossum, Guinea pig, Lizard, Xenopus, Salmon, Zebrafish (100%), Turkey, Chicken, Platypus, Stickleback (92%), Beetle (84%), Drosophila (81%). Type of Immunogen: Synthetic peptide
Specificity:	Human RIOK2

Product Details

Purification: Immunoaffinity purified

Target Details

Target: RIOK2

Alternative Name: RIOK2 ([RIOK2 Products](#))

Background: Name/Gene ID: RIOK2
Subfamily: RIO
Family: Protein Kinase

Synonyms: RIOK2, RIO kinase 2, RIO kinase 2 (yeast), RIO2

Gene ID: 55781

NCBI Accession: [NP_060813](#)

Application Details

Application Notes: Approved: IHC, IHC-P (10 µg/mL), WB (0.2 - 1 µg/mL)

Usage: Western Blot: Suggested dilution at 1 µg/mL in 5 % skim milk / PBS buffer, and HRP conjugated anti-Rabbit IgG should be diluted in 1: 50,000 - 100,000 as secondary antibody.

Comment: Target Species of Antibody: Human

Restrictions: For Research Use only

Handling

Format: Lyophilized

Reconstitution: Distilled water

Concentration: Lot specific

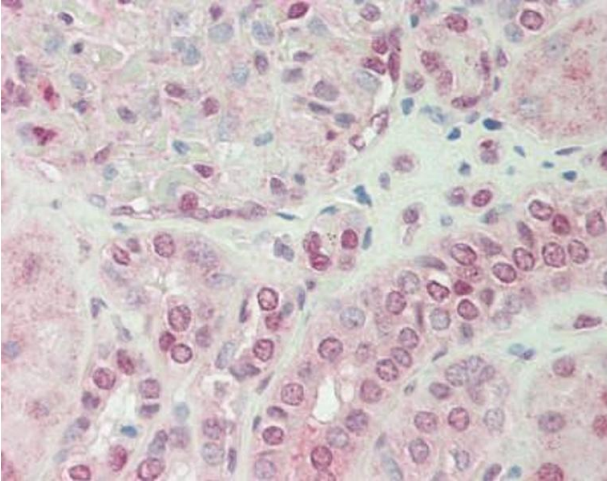
Buffer: Lyophilized from PBS with 2 % sucrose

Handling Advice: Avoid repeat freeze-thaw cycles.

Storage: 4 °C, -20 °C

Storage Comment: Long term: -20°C, the use of 50% glycerol is recommended if storing aliquots in -20°C for long term use (up to 1 year)

Short term (less than 1 week): 4°C. Avoid freeze-thaw cycles.



Immunohistochemistry (Paraffin-embedded Sections)

Image 1. Human Kidney: Formalin-Fixed, Paraffin-Embedded (FFPE). This image was taken for the unconjugated form of this product. Other forms have not been tested.