



## Datasheet for ABIN6756603 anti-PQBP1 antibody (AA 72-121)



[Go to Product page](#)

### 1 Image

#### Overview

Quantity:	100 µL
Target:	PQBP1
Binding Specificity:	AA 72-121
Reactivity:	Human, Rat, Cow, Dog, Horse, Pig, Guinea Pig, Monkey
Host:	Rabbit
Clonality:	Polyclonal
Conjugate:	This PQBP1 antibody is un-conjugated
Application:	Western Blotting (WB), Immunohistochemistry (IHC), Immunohistochemistry (Paraffin-embedded Sections) (IHC (p))

#### Product Details

Brand:	IHC-plus™
Immunogen:	Synthetic peptide located between aa72-121 of human PQBP1 (O60828, NP_001027555). Percent identity by BLAST analysis: Human, Chimpanzee, Gorilla, Orangutan, Gibbon, Monkey, Rat, Elephant, Dog, Bovine, Horse, Pig, Guinea pig (100%), Galago, Panda, Rabbit (92%), Marmoset, Bat (85%), Opossum (83%).  Type of Immunogen: Synthetic peptide
Isotype:	IgG
Specificity:	Human PQBP1
Purification:	Immunoaffinity purified

## Target Details

---

Target:	PQBP1
Alternative Name:	PQBP1 ( <a href="#">PQBP1 Products</a> )
Background:	Name/Gene ID: PQBP1  Synonyms: PQBP1, MRX55, MRXS3, PQBP-1, MRXS8, NPW38, RENS1, SHS
Gene ID:	10084
NCBI Accession:	<a href="#">NP_001027555</a>
Pathways:	<a href="#">Ribonucleoprotein Complex Subunit Organization</a>

## Application Details

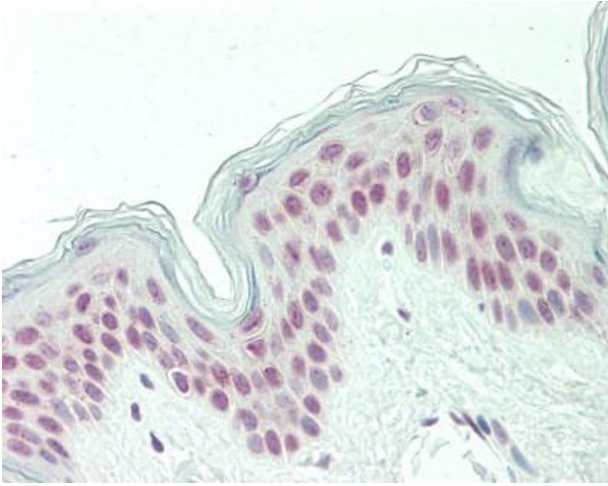
---

Application Notes:	Approved: IHC, IHC-P (10 µg/mL), WB (0.2 - 1 µg/mL)  Usage: Western Blot: Suggested dilution at 1 µg/mL in 5 % skim milk / PBS buffer, and HRP conjugated anti-Rabbit IgG should be diluted in 1: 50,000 - 100,000 as second antibody. ELISA titer in peptide based assay: 1:62500.
Comment:	Target Species of Antibody: Human
Restrictions:	For Research Use only

## Handling

---

Format:	Lyophilized
Reconstitution:	Distilled water
Concentration:	Lot specific
Buffer:	Lyophilized from PBS with 2 % sucrose
Handling Advice:	Avoid repeat freeze-thaw cycles.
Storage:	4 °C, -20 °C
Storage Comment:	Long term: -20°C, the use of 50% glycerol is recommended if storing aliquots in -20°C for long term use (up to 1 year)  Short term (less than 1 week): 4°C. Avoid freeze-thaw cycles.



#### Immunohistochemistry (Paraffin-embedded Sections)

**Image 1.** Human Skin: Formalin-Fixed, Paraffin-Embedded (FFPE). This image was taken for the unconjugated form of this product. Other forms have not been tested.