

Datasheet for ABIN6756604 anti-CXXC1 antibody (AA 431-480)



[Go to Product page](#)

1 Image

Overview

Quantity:	100 µL
Target:	CXXC1
Binding Specificity:	AA 431-480
Reactivity:	Human, Dog, Horse, Rabbit, Cow, Guinea Pig, Pig, Monkey, Bat
Host:	Rabbit
Clonality:	Polyclonal
Conjugate:	This CXXC1 antibody is un-conjugated
Application:	Western Blotting (WB), Immunohistochemistry (IHC), Immunohistochemistry (Paraffin-embedded Sections) (IHC (p))

Product Details

Brand:	IHC-plus™
Immunogen:	Synthetic peptide located between aa431-480 of human CXXC1 (Q9P0U4, NP_055408). Percent identity by BLAST analysis: Human, Chimpanzee, Gorilla, Gibbon, Monkey, Galago, Marmoset, Elephant, Dog, Bovine, Bat, Rabbit, Horse, Pig, Guinea pig, Platypus (100%), Mouse, Rat, Goat, Opossum (92%). Type of Immunogen: Synthetic peptide
Isotype:	IgG
Specificity:	Human CXXC1 / CGBP
Purification:	Immunoaffinity purified

Target Details

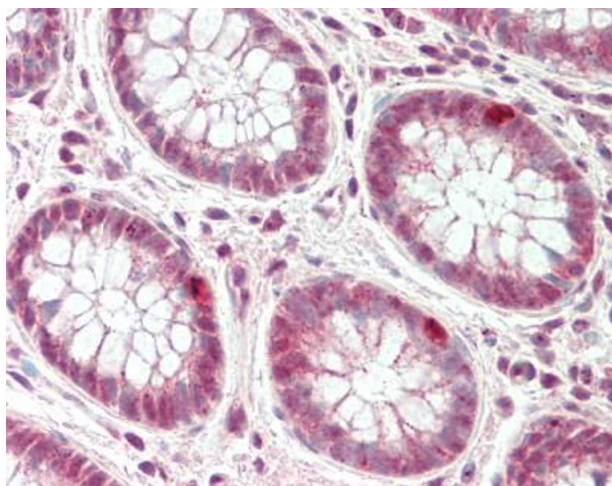
Target:	CXXC1
Alternative Name:	CXXC1 / CGBP (CXXC1 Products)
Background:	Name/Gene ID: CXXC1 Synonyms: CXXC1, CpG-binding protein, CXXC finger protein 1, HCGBP, HsT2645, PCCX1, PHF18, ZCGPC1, CFP1, CGBP, CpG binding protein, CXXC finger 1 (PHD domain)
Gene ID:	30827
NCBI Accession:	NP_055408
Pathways:	ER-Nucleus Signaling

Application Details

Application Notes:	Approved: IHC, IHC-P (10 µg/mL), WB (0.2 - 1 µg/mL) Usage: Western Blot: Suggested dilution at 1 µg/mL in 5 % skim milk / PBS buffer, and HRP conjugated anti-Rabbit IgG should be diluted in 1: 50,000 - 100,000 as second antibody. ELISA titer in peptide based assay: 1:62500.
Comment:	Target Species of Antibody: Human
Restrictions:	For Research Use only

Handling

Format:	Lyophilized
Reconstitution:	Distilled water
Concentration:	Lot specific
Buffer:	Lyophilized from PBS with 2 % sucrose
Handling Advice:	Avoid repeat freeze-thaw cycles.
Storage:	4 °C,-20 °C
Storage Comment:	Long term: -20°C, the use of 50% glycerol is recommended if storing aliquots in -20°C for long term use (up to 1 year) Short term (less than 1 week): 4°C. Avoid freeze-thaw cycles.



Immunohistochemistry (Paraffin-embedded Sections)

Image 1. Human Colon: Formalin-Fixed, Paraffin-Embedded (FFPE). This image was taken for the unconjugated form of this product. Other forms have not been tested.