

Datasheet for ABIN6756611
anti-CBX3 antibody (AA 61-110)



[Go to Product page](#)

1 Image

Overview

Quantity:	100 µL
Target:	CBX3
Binding Specificity:	AA 61-110
Reactivity:	Human, Mouse, Rat, Dog, Cow, Guinea Pig, Horse, Rabbit, Monkey, Hamster, Bat
Host:	Rabbit
Clonality:	Polyclonal
Conjugate:	This CBX3 antibody is un-conjugated
Application:	Western Blotting (WB), Immunohistochemistry (IHC), Immunohistochemistry (Paraffin-embedded Sections) (IHC (p))

Product Details

Brand:	IHC-plus™
Immunogen:	Synthetic peptide located between aa61-110 of human CBX3 (Q13185, NP_009207). Percent identity by BLAST analysis: Human, Chimpanzee, Gorilla, Orangutan, Gibbon, Monkey, Marmoset, Mouse, Rat, Hamster, Elephant, Panda, Dog, Bovine, Bat, Rabbit, Horse, Opossum, Guinea pig (100%), Pig (92%), Turkey, Zebra finch, Chicken, Platypus (86%), Frog (81%), Xenopus (80%). Type of Immunogen: Synthetic peptide
Isotype:	IgG
Specificity:	Human CBX3

Product Details

Purification: Immunoaffinity purified

Target Details

Target: CBX3

Alternative Name: CBX3 / HP1 gamma ([CBX3 Products](#))

Background: Name/Gene ID: CBX3

Synonyms: CBX3, Chromobox homolog 3, HP1Hs-gamma, Heterochromatin-like protein 1, Modifier 2 protein, HP1-GAMMA, Chromobox protein homolog 3, HECH, HP1 gamma, HP1 gamma homolog

Gene ID: 11335

NCBI Accession: [NP_009207](#)

Application Details

Application Notes: Approved: IHC, IHC-P (5 µg/mL), WB (0.2 - 1 µg/mL)

Comment: Target Species of Antibody: Human

Restrictions: For Research Use only

Handling

Format: Lyophilized

Reconstitution: After adding water, will consist of PBS buffer with 2 % sucrose

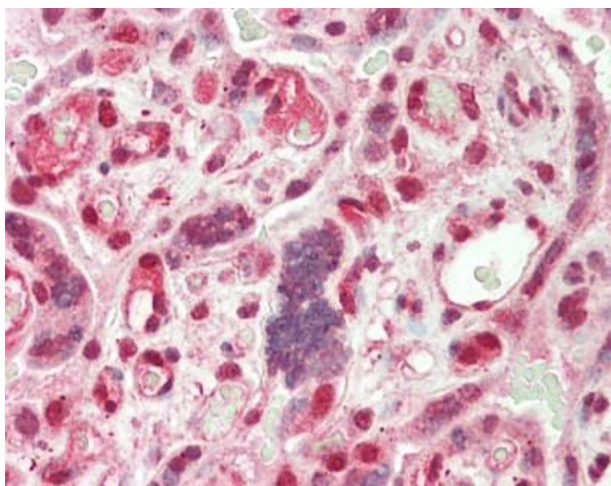
Concentration: Lot specific

Buffer: Lyophilized from PBS with 2 % sucrose

Handling Advice: Avoid repeat freeze-thaw cycles.

Storage: 4 °C, -20 °C

Storage Comment: Long term: -20°C, the use of 50% glycerol is recommended if storing aliquots in -20°C for long term use (up to 1 year)
Short term (less than 1 week): 4°C. Avoid freeze-thaw cycles.



Immunohistochemistry (Paraffin-embedded Sections)

Image 1. Human Placenta: Formalin-Fixed, Paraffin-Embedded (FFPE). This image was taken for the unconjugated form of this product. Other forms have not been tested.