

Datasheet for ABIN6756619
anti-PSMA6 antibody (AA 26-75)[Go to Product page](#)

1 Image

Overview

Quantity:	100 µL
Target:	PSMA6
Binding Specificity:	AA 26-75
Reactivity:	Human, Mouse, Rat, Dog, Rabbit, Cow, Goat, Guinea Pig, Horse, Sheep, Zebrafish (Danio rerio), Bat, Pig
Host:	Rabbit
Clonality:	Polyclonal
Conjugate:	This PSMA6 antibody is un-conjugated
Application:	Western Blotting (WB), Immunohistochemistry (IHC), Immunohistochemistry (Paraffin-embedded Sections) (IHC (p))

Product Details

Brand:	IHC-plus™
Immunogen:	Synthetic peptide located between aa26-75 of human PSMA6 (P60900, NP_002782). Percent identity by BLAST analysis: Human, Chimpanzee, Gorilla, Gibbon, Monkey, Galago, Mouse, Rat, Sheep, Goat, Elephant, Panda, Dog, Bovine, Bat, Rabbit, Horse, Pig, Opossum, Guinea pig, Platypus, Lizard, Trout, Zebrafish, Rice, Grape (100%), Marmoset, Turkey, Zebra finch, Chicken, Salmon, Sablefish, Arabidopsis (92%), Xenopus, Frog, Catfish (85%). Type of Immunogen: Synthetic peptide
Isotype:	IgG

Product Details

Specificity:	Human PSMA6
Purification:	Immunoaffinity purified

Target Details

Target:	PSMA6
Alternative Name:	PSMA6 (PSMA6 Products)
Background:	<p>Name/Gene ID: PSMA6</p> <p>Subfamily: Threonine T1</p> <p>Family: Protease Non Catalytic</p> <p>Synonyms: PSMA6, 27 kDa prosomal protein, Macropain iota chain, PROS27, Proteasome iota chain, p27K, PROS-27, IOTA, Macropain subunit iota, Prosomal P27K protein, Proteasome subunit iota</p>
Gene ID:	5687
NCBI Accession:	NP_002782
Pathways:	Mitotic G1-G1/S Phases , DNA Replication , Synthesis of DNA

Application Details

Application Notes:	<p>Approved: IHC, IHC-P (10 µg/mL), WB (0.2 - 1 µg/mL)</p> <p>Usage: ELISA titer using peptide based assay: 1:312500. Western Blot: Suggested dilution at 0.5 µg/mL in 5 % skim milk / PBS buffer, and HRP conjugated anti-Rabbit IgG should be diluted in 1:50000 - 100000 as second antibody.</p>
Comment:	Target Species of Antibody: Human
Restrictions:	For Research Use only

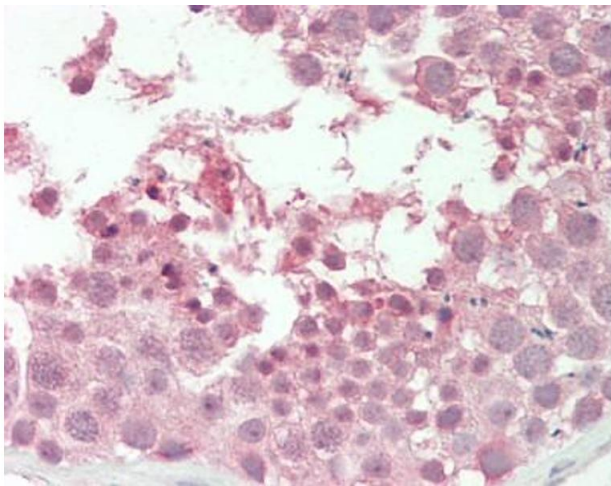
Handling

Format:	Lyophilized
Reconstitution:	Distilled Water.
Concentration:	Lot specific
Buffer:	Lyophilized from PBS with 2 % sucrose

Handling

Handling Advice:	Avoid repeat freeze-thaw cycles.
Storage:	4 °C,-20 °C
Storage Comment:	Long term: -20°C, the use of 50% glycerol is recommended if storing aliquots in -20°C for long term use (up to 1 year) Short term (less than 1 week): 4°C. Avoid freeze-thaw cycles.

Images



Immunohistochemistry (Paraffin-embedded Sections)

Image 1. Human Testis: Formalin-Fixed, Paraffin-Embedded (FFPE). This image was taken for the unconjugated form of this product. Other forms have not been tested.