



[Go to Product page](#)

Datasheet for ABIN6756621  
**anti-EIF4H antibody (C-Term)**

1 Image

### Overview

Quantity:	100 µL
Target:	EIF4H
Binding Specificity:	C-Term
Reactivity:	Human, Mouse, Rat, Monkey
Host:	Rabbit
Clonality:	Polyclonal
Conjugate:	This EIF4H antibody is un-conjugated
Application:	Western Blotting (WB), Immunohistochemistry (IHC), Immunohistochemistry (Paraffin-embedded Sections) (IHC (p))

### Product Details

Brand:	IHC-plus™
Immunogen:	Synthetic peptide from C-Terminus of human EIF4H (Q15056, NP_071496). Percent identity by BLAST analysis: Human, Chimpanzee, Gorilla, Orangutan, Gibbon, Monkey, Mouse, Rat, Panda (100%), Galago, Elephant, Dog, Bovine, Bat, Rabbit, Horse, Opossum, Guinea pig (92%).  Type of Immunogen: Synthetic peptide
Isotype:	IgG
Specificity:	Human EIF4H
Purification:	Immunoaffinity purified

## Target Details

---

Target:	EIF4H
Alternative Name:	EIF4H ( <a href="#">EIF4H Products</a> )
Background:	Name/Gene ID: EIF4H  Synonyms: EIF4H, KIAA0038, WBSCR1, WSCR1, EIF-4H
Gene ID:	7458
NCBI Accession:	<a href="#">NP_071496</a>
Pathways:	<a href="#">SARS-CoV-2 Protein Interactome</a>

## Application Details

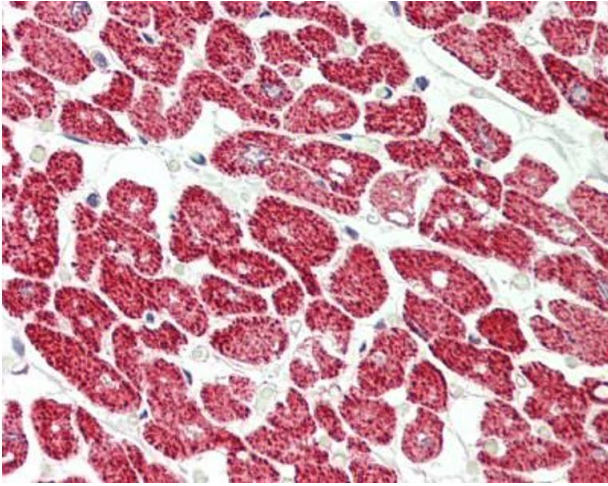
---

Application Notes:	Approved: IHC, IHC-P (5 µg/mL), WB (0.2 - 1 µg/mL)  Usage: ELISA titer using peptide based assay: 1:62500. Western Blot: Suggested dilution at 1 µg/mL in 5 % skim milk / PBS buffer, and HRP conjugated anti-Rabbit IgG should be diluted in 1:50000 - 100000 as second antibody.
Comment:	Target Species of Antibody: Human
Restrictions:	For Research Use only

## Handling

---

Format:	Lyophilized
Reconstitution:	Distilled Water.
Concentration:	Lot specific
Buffer:	Lyophilized from PBS with 2 % sucrose
Handling Advice:	Avoid repeat freeze-thaw cycles.
Storage:	4 °C, -20 °C
Storage Comment:	Long term: -20°C, the use of 50% glycerol is recommended if storing aliquots in -20°C for long term use (up to 1 year)  Short term (less than 1 week): 4°C. Avoid freeze-thaw cycles.



#### Immunohistochemistry (Paraffin-embedded Sections)

**Image 1.** Human Heart: Formalin-Fixed, Paraffin-Embedded (FFPE). This image was taken for the unconjugated form of this product. Other forms have not been tested.