

Datasheet for ABIN6756628
anti-ACPP antibody (AA 215-264)



[Go to Product page](#)

1 Image

Overview

Quantity:	100 µL
Target:	ACPP
Binding Specificity:	AA 215-264
Reactivity:	Human, Mouse, Rat, Cow, Dog, Rabbit, Guinea Pig, Monkey, Bat
Host:	Rabbit
Clonality:	Polyclonal
Conjugate:	This ACPP antibody is un-conjugated
Application:	Western Blotting (WB), Immunohistochemistry (IHC), Immunohistochemistry (Paraffin-embedded Sections) (IHC (p))

Product Details

Brand:	IHC-plus™
Immunogen:	Synthetic peptide located between aa215-264 of human ACPP (P15309, NP_001090). Percent identity by BLAST analysis: Human, Chimpanzee, Gorilla, Orangutan, Gibbon, Monkey, Marmoset, Mouse, Rat, Dog, Bovine, Bat, Rabbit, Guinea pig, Turkey, Zebra finch, Platypus, Lizard (100%), Horse, Opossum, Chicken (92%), Galago (85%), Elephant (84%). Type of Immunogen: Synthetic peptide
Isotype:	IgG
Specificity:	Human ACPP
Purification:	Immunoaffinity purified

Target Details

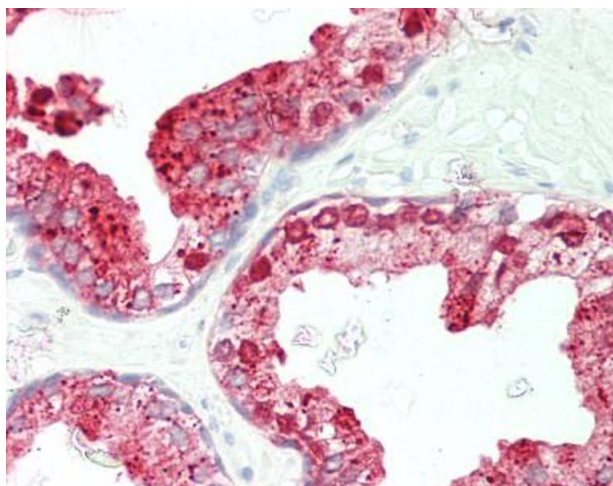
Target:	ACPP
Alternative Name:	ACPP / PAP (ACPP Products)
Background:	<p>Name/Gene ID: ACPP</p> <p>Synonyms: ACPP, ACP3, 5-NT, 5-nucleotidase, Acid phosphatase, prostate, ACP-3, Ecto-5-nucleotidase, PAP, Prostatic acid phosphatase, Thiamine monophosphatase, Prostatic acid phosphotase, TMPase</p>
Gene ID:	55
NCBI Accession:	NP_001090
Pathways:	Synaptic Membrane , Ribonucleoside Biosynthetic Process

Application Details

Application Notes:	<p>Approved: IHC, IHC-P (10 µg/mL), WB (0.2 - 1 µg/mL)</p> <p>Usage: Western Blot: Suggested dilution at 1 µg/mL in 5 % skim milk / PBS buffer, and HRP conjugated anti-Rabbit IgG should be diluted in 1: 50,000 - 100,000 as second antibody. ELISA titer in peptide based assay: 1:62500.</p>
Comment:	Target Species of Antibody: Human
Restrictions:	For Research Use only

Handling

Format:	Lyophilized
Reconstitution:	Distilled water
Concentration:	Lot specific
Buffer:	Lyophilized from PBS with 2 % sucrose
Handling Advice:	Avoid repeat freeze-thaw cycles.
Storage:	4 °C, -20 °C
Storage Comment:	<p>Long term: -20°C, the use of 50% glycerol is recommended if storing aliquots in -20°C for long term use (up to 1 year)</p> <p>Short term (less than 1 week): 4°C. Avoid freeze-thaw cycles.</p>



Immunohistochemistry (Paraffin-embedded Sections)

Image 1. Human Prostate: Formalin-Fixed, Paraffin-Embedded (FFPE). This image was taken for the unconjugated form of this product. Other forms have not been tested.