



[Go to Product page](#)

Datasheet for ABIN6756629  
**anti-DHODH antibody (AA 69-118)**

1 Image

Overview

Quantity:	100 µL
Target:	DHODH
Binding Specificity:	AA 69-118
Reactivity:	Human, Mouse, Dog, Zebrafish (Danio rerio), Horse, Cow, Rabbit, Pig, Bat, Hamster, Monkey, Chicken
Host:	Rabbit
Clonality:	Polyclonal
Conjugate:	This DHODH antibody is un-conjugated
Application:	Western Blotting (WB), Immunohistochemistry (IHC), Immunohistochemistry (Paraffin-embedded Sections) (IHC (p))

Product Details

Brand:	IHC-plus™
Immunogen:	Synthetic peptide located between aa69-118 of human DHODH (Q02127, NP_001352). Percent identity by BLAST analysis: Human, Chimpanzee, Gorilla, Orangutan, Gibbon, Monkey, Galago, Marmoset, Mouse, Hamster, Panda, Dog, Bovine, Bat, Rabbit, Horse, Pig, Turkey, Chicken, Salmon, Stickleback, Pufferfish, Zebrafish (100%), Rat, Elephant, Opossum, Guinea pig, Platypus, Xenopus, Medaka (92%), Mosquito, Sea anemone (91%), Zebra finch (85%), Drosophila, Poplar (83%).  Type of Immunogen: Synthetic peptide
Specificity:	Human DHODH

## Product Details

---

Purification: Immunoaffinity purified

## Target Details

---

Target: DHODH

Alternative Name: DHODH ([DHODH Products](#))

Background: Name/Gene ID: DHODH

Synonyms: DHODH, Dihydroorotate dehydrogenase, Dihydroorotate oxidase, Human complement of yeast URA1, POADS, URA1, DHodehase

Gene ID: 1723

NCBI Accession: [NP\\_001352](#)

Pathways: [Ribonucleoside Biosynthetic Process](#), [Protein targeting to Nucleus](#)

## Application Details

---

Application Notes: Approved: IHC, IHC-P (10 µg/mL), WB (1 µg/mL)

Comment: Target Species of Antibody: Human

Restrictions: For Research Use only

## Handling

---

Format: Lyophilized

Reconstitution: Distilled water

Concentration: Lot specific

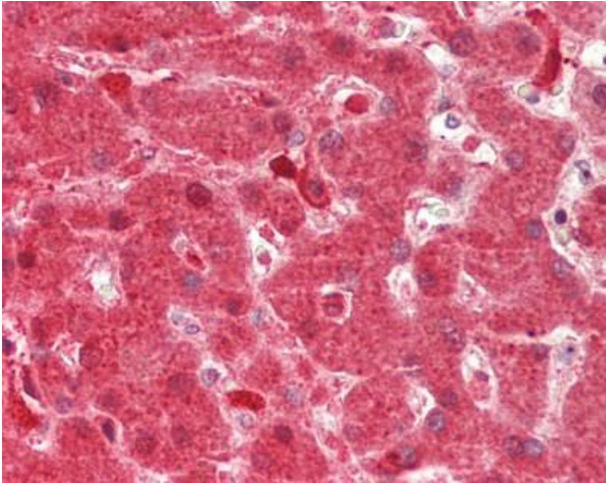
Buffer: Lyophilized from PBS, 2 % sucrose.

Handling Advice: Avoid repeat freeze-thaw cycles.

Storage: 4 °C,-20 °C

Storage Comment: Long term: -20°C, the use of 50% glycerol is recommended if storing aliquots in -20°C for long term use (up to 1 year)

Short term (less than 1 week): 4°C. Avoid freeze-thaw cycles.



#### Immunohistochemistry (Paraffin-embedded Sections)

**Image 1.** Human Liver: Formalin-Fixed, Paraffin-Embedded (FFPE). This image was taken for the unconjugated form of this product. Other forms have not been tested.