

Datasheet for ABIN6756633
anti-SLC7A7 antibody (AA 179-228)[Go to Product page](#)

1 Image

Overview

Quantity:	100 µL
Target:	SLC7A7 (Slc7a7)
Binding Specificity:	AA 179-228
Reactivity:	Human, Cow, Horse, Rabbit
Host:	Rabbit
Clonality:	Polyclonal
Conjugate:	This SLC7A7 antibody is un-conjugated
Application:	Western Blotting (WB), Immunohistochemistry (IHC), Immunohistochemistry (Paraffin-embedded Sections) (IHC (p))

Product Details

Brand:	IHC-plus™
Immunogen:	Synthetic peptide located between aa179-228 of human SLC7A7 (Q9UM01). Percent identity by BLAST analysis: Human, Chimpanzee, Gorilla, Orangutan, Gibbon, Marmoset, Bovine, Rabbit, Horse (100%), Monkey, Panda, Pig (92%), Bat (91%), Elephant, Dog (85%), Turkey, Platypus (83%), Opossum (80%), Mouse, Rat (78%). Type of Immunogen: Synthetic peptide
Specificity:	Human SLC7A7
Purification:	Immunoaffinity purified

Target Details

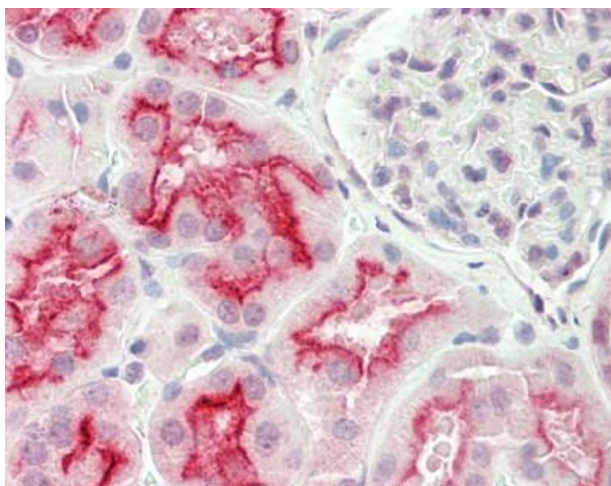
Target:	SLC7A7 (Slc7a7)
Alternative Name:	SLC7A7 (Slc7a7 Products)
Background:	Name/Gene ID: SLC7A7 Subfamily: Cationic amino acid transporter Family: Transporter Synonyms: SLC7A7, LPI, Lysinuric protein intolerance, Monocyte amino acid permease 2, MOP-2, LAT3, Y+L amino acid transporter 1, My+lat1, Y+LAT-1, Y+LAT1
Gene ID:	9056

Application Details

Application Notes:	Approved: IHC, IHC-P (10 µg/mL), WB (0.2 - 1 µg/mL) Usage: Western Blot: Suggested dilution at 1 µg/mL in 5 % skim milk / PBS buffer, and HRP conjugated anti-Rabbit IgG should be diluted in 1: 50,000 - 100,000 as secondary antibody.
Comment:	Target Species of Antibody: Human
Restrictions:	For Research Use only

Handling

Format:	Lyophilized
Reconstitution:	Distilled water
Concentration:	Lot specific
Buffer:	Lyophilized from PBS with 2 % sucrose
Handling Advice:	Avoid repeat freeze-thaw cycles.
Storage:	4 °C, -20 °C
Storage Comment:	Long term: -20°C, the use of 50% glycerol is recommended if storing aliquots in -20°C for long term use (up to 1 year) Short term (less than 1 week): 4°C. Avoid freeze-thaw cycles.



Immunohistochemistry (Paraffin-embedded Sections)

Image 1. Human Kidney: Formalin-Fixed, Paraffin-Embedded (FFPE). This image was taken for the unconjugated form of this product. Other forms have not been tested.