

Datasheet for ABIN6756637
anti-NIT2 antibody (AA 72-121)[Go to Product page](#)

1 Image

Overview

Quantity:	100 µL
Target:	NIT2
Binding Specificity:	AA 72-121
Reactivity:	Human, Mouse, Rabbit, Dog, Guinea Pig, Horse, Hamster, Monkey, Pig
Host:	Rabbit
Clonality:	Polyclonal
Conjugate:	This NIT2 antibody is un-conjugated
Application:	Western Blotting (WB), Immunohistochemistry (IHC), Immunohistochemistry (Paraffin-embedded Sections) (IHC (p))

Product Details

Brand:	IHC-plus™
Immunogen:	Synthetic peptide located between aa72-121 of human NIT2 (Q9NQR4, NP_064587). Percent identity by BLAST analysis: Human, Chimpanzee, Gorilla, Orangutan, Gibbon, Monkey, Galago, Marmoset, Mouse, Hamster, Elephant, Dog, Rabbit, Horse, Pig, Guinea pig, Platypus (100%), Rat, Bovine, Turkey, Zebra finch, Chicken, Xenopus, Stickleback, Zebrafish (92%), Salmon (86%), Lizard, Pike, Drosophila (85%). Type of Immunogen: Synthetic peptide
Specificity:	Human NIT2
Purification:	Immunoaffinity purified

Target Details

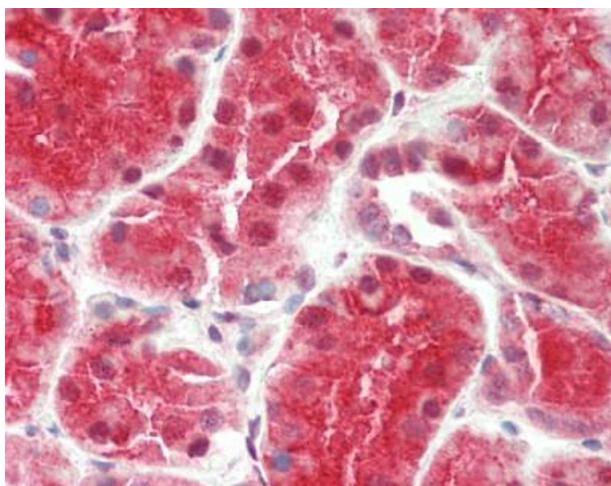
Target:	NIT2
Alternative Name:	NIT2 (NIT2 Products)
Background:	Name/Gene ID: NIT2 Synonyms: NIT2, Omega-amidase NIT2, Nit protein 2, Nitrilase family, member 2, Nitrilase homolog 2
Gene ID:	56954
NCBI Accession:	NP_064587

Application Details

Application Notes:	Approved: IHC, IHC-P (10 µg/mL), WB (0.2 - 1 µg/mL) Usage: Western Blot: Suggested dilution at 1 µg/mL in 5 % skim milk / PBS buffer, and HRP conjugated anti-Rabbit IgG should be diluted in 1: 50,000 - 100,000 as secondary antibody.
Comment:	Target Species of Antibody: Human
Restrictions:	For Research Use only

Handling

Format:	Lyophilized
Reconstitution:	Distilled water
Concentration:	Lot specific
Buffer:	Lyophilized from PBS with 2 % sucrose
Handling Advice:	Avoid repeat freeze-thaw cycles.
Storage:	4 °C, -20 °C
Storage Comment:	Long term: -20°C, the use of 50% glycerol is recommended if storing aliquots in -20°C for long term use (up to 1 year) Short term (less than 1 week): 4°C. Avoid freeze-thaw cycles.



Immunohistochemistry (Paraffin-embedded Sections)

Image 1. Human Kidney: Formalin-Fixed, Paraffin-Embedded (FFPE). This image was taken for the unconjugated form of this product. Other forms have not been tested.