



[Go to Product page](#)

Datasheet for ABIN6756639
anti-PFN1 antibody (N-Term)

1 Image

Overview

Quantity:	100 µL
Target:	PFN1
Binding Specificity:	N-Term
Reactivity:	Human, Mouse, Rat, Monkey, Cow, Guinea Pig, Horse, Pig
Host:	Rabbit
Clonality:	Polyclonal
Conjugate:	This PFN1 antibody is un-conjugated
Application:	Western Blotting (WB), Immunohistochemistry (IHC), Immunohistochemistry (Paraffin-embedded Sections) (IHC (p))

Product Details

Brand:	IHC-plus™
Immunogen:	Synthetic peptide from N-Terminus of human PFN1 (P07737, NP_005013). Percent identity by BLAST analysis: Human, Gorilla, Gibbon, Monkey, Marmoset, Mouse, Rat, Elephant, Bovine, Horse, Pig, Opossum, Guinea pig (100%), Bat (92%), Catfish, Zebrafish (90%), Xenopus (84%). Type of Immunogen: Synthetic peptide
Isotype:	IgG
Specificity:	Human PFN1 / Profilin 1
Purification:	Immunoaffinity purified

Target Details

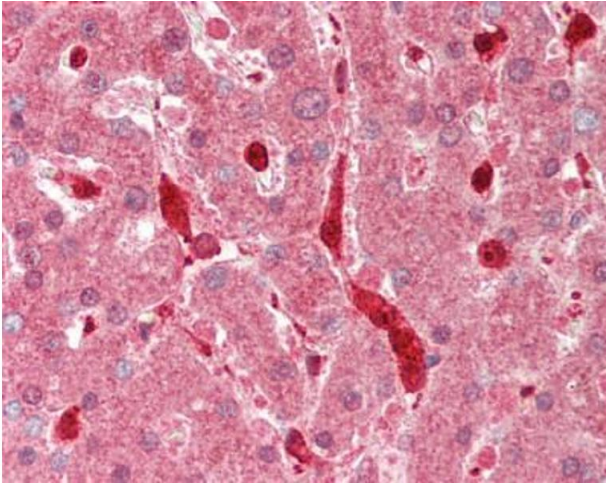
Target:	PFN1
Alternative Name:	PFN1 / Profilin 1 (PFN1 Products)
Background:	Name/Gene ID: PFN1 Synonyms: PFN1, ALS18, Profilin-1, Profilin 1, Profilin I
Gene ID:	5216
NCBI Accession:	NP_005013
Pathways:	Regulation of Actin Filament Polymerization , Tube Formation , Maintenance of Protein Location

Application Details

Application Notes:	Approved: IHC, IHC-P (10 µg/mL), WB (0.2 - 1 µg/mL) Usage: ELISA titer using peptide based assay: 1:12500. Western Blot: Suggested dilution at 1 µg/mL in 5 % skim milk / PBS buffer, and HRP conjugated anti-Rabbit IgG should be diluted in 1:50000 - 100000 as second antibody.
Comment:	Target Species of Antibody: Human
Restrictions:	For Research Use only

Handling

Format:	Lyophilized
Reconstitution:	Distilled Water.
Concentration:	Lot specific
Buffer:	Lyophilized from PBS with 2 % sucrose
Handling Advice:	Avoid repeat freeze-thaw cycles.
Storage:	4 °C, -20 °C
Storage Comment:	Long term: -20°C, the use of 50% glycerol is recommended if storing aliquots in -20°C for long term use (up to 1 year) Short term (less than 1 week): 4°C. Avoid freeze-thaw cycles.



Immunohistochemistry (Paraffin-embedded Sections)

Image 1. Human Liver: Formalin-Fixed, Paraffin-Embedded (FFPE). This image was taken for the unconjugated form of this product. Other forms have not been tested.