



[Go to Product page](#)

Datasheet for ABIN6756641  
**anti-CLPTM1L antibody (AA 467-516)**

1 Image

### Overview

Quantity:	100 µL
Target:	CLPTM1L
Binding Specificity:	AA 467-516
Reactivity:	Human, Mouse, Rat, Rabbit, Cow, Dog, Guinea Pig, Horse, Bat, Hamster, Pig, Xenopus laevis
Host:	Rabbit
Clonality:	Polyclonal
Conjugate:	This CLPTM1L antibody is un-conjugated
Application:	Western Blotting (WB), Immunohistochemistry (IHC), Immunohistochemistry (Paraffin-embedded Sections) (IHC (p))

### Product Details

Brand:	IHC-plus™
Immunogen:	Synthetic peptide located between aa467-516 of human CLPTM1L (Q96KA5, NP_110409). Percent identity by BLAST analysis: Human, Chimpanzee, Gorilla, Orangutan, Gibbon, Monkey, Galago, Mouse, Rat, Hamster, Elephant, Dog, Bovine, Bat, Rabbit, Horse, Pig, Guinea pig, Xenopus (100%), Opossum, Turkey, Zebra finch, Chicken, Platypus, Lizard, Zebrafish, Drosophila (92%), Marmoset, Stickleback (90%), Salmon (85%).  Type of Immunogen: Synthetic peptide
Isotype:	IgG
Specificity:	Human CLPTM1L

## Product Details

---

Purification: Immunoaffinity purified

## Target Details

---

Target: CLPTM1L

Alternative Name: CLPTM1L / CLPTM1-Like ([CLPTM1L Products](#))

Background: Name/Gene ID: CLPTM1L

Synonyms: CLPTM1L, CRR9, CLPTM1-like, CLPTM1-like protein, CRR9p

Gene ID: 81037

NCBI Accession: [NP\\_110409](#)

## Application Details

---

Application Notes: Approved: IHC, IHC-P (10 µg/mL), WB (0.2 - 1 µg/mL)

Usage: Western Blot: Suggested dilution at 1.0 µg/mL in 5 % skim milk / PBS buffer, and HRP conjugated anti-Rabbit IgG should be diluted in 1: 50,000 - 100,000 as second antibody. ELISA titer in peptide based assay: 1:312500.

Comment: Target Species of Antibody: Human

Restrictions: For Research Use only

## Handling

---

Format: Lyophilized

Reconstitution: Distilled water

Concentration: Lot specific

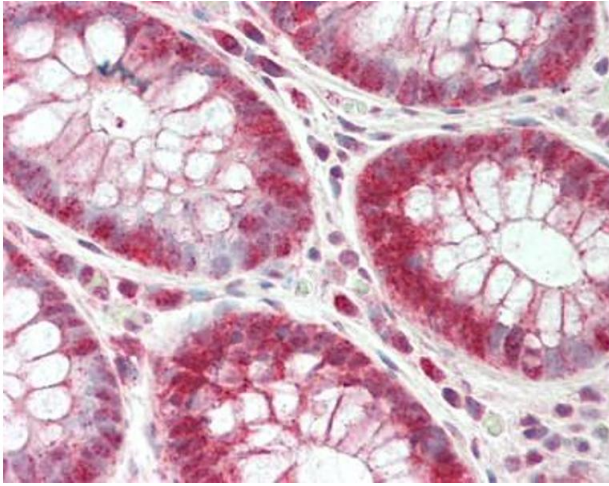
Buffer: Lyophilized from PBS with 2 % sucrose

Handling Advice: Avoid repeat freeze-thaw cycles.

Storage: 4 °C, -20 °C

Storage Comment: Long term: -20°C, the use of 50% glycerol is recommended if storing aliquots in -20°C for long term use (up to 1 year)

Short term (less than 1 week): 4°C. Avoid freeze-thaw cycles.



#### Immunohistochemistry (Paraffin-embedded Sections)

**Image 1.** Human Colon: Formalin-Fixed, Paraffin-Embedded (FFPE). This image was taken for the unconjugated form of this product. Other forms have not been tested.