

Datasheet for ABIN6756645  
**anti-CRAT antibody (AA 22-71)**



[Go to Product page](#)

1 Image

## Overview

Quantity:	100 µL
Target:	CRAT
Binding Specificity:	AA 22-71
Reactivity:	Human
Host:	Rabbit
Clonality:	Polyclonal
Conjugate:	This CRAT antibody is un-conjugated
Application:	Western Blotting (WB), Immunohistochemistry (IHC), Immunohistochemistry (Paraffin-embedded Sections) (IHC (p))

## Product Details

Brand:	IHC-plus™
Immunogen:	Synthetic peptide located between aa22-71 of human CRAT (P43155). Percent identity by BLAST analysis: Human, Galago, Marmoset (100%), Gorilla, Gibbon, Monkey, Mouse, Rat, Hamster, Elephant, Panda, Dog, Bovine, Rabbit, Armadillo (92%), Guinea pig (90%), Horse (84%).  Type of Immunogen: Synthetic peptide
Isotype:	IgG
Specificity:	Human CRAT
Purification:	Immunoaffinity purified

## Target Details

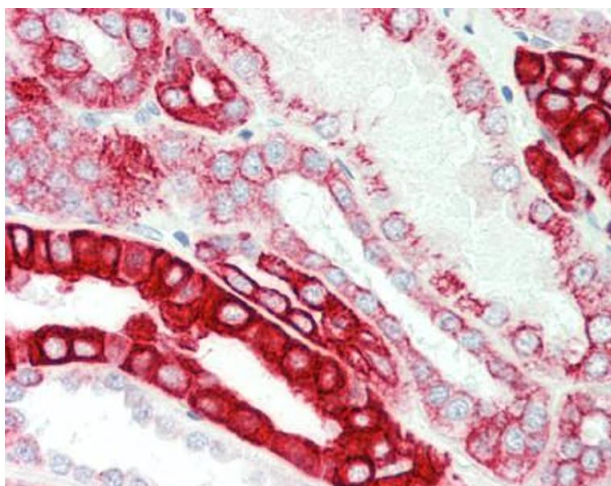
Target:	CRAT
Alternative Name:	CRAT ( <a href="#">CRAT Products</a> )
Background:	Name/Gene ID: CRAT  Synonyms: CRAT, CAT1, Carnitine O-acetyltransferase, Carnitine acetylase, Carnitine acetyltransferase
Gene ID:	1384
Pathways:	<a href="#">Monocarboxylic Acid Catabolic Process</a>

## Application Details

Application Notes:	Approved: IHC, IHC-P (10 µg/mL), WB (0.2 - 1 µg/mL)  Usage: ELISA titer using peptide based assay: 1:312500. Western Blot: Suggested dilution at 1 µg/mL in 5 % skim milk / PBS buffer, and HRP conjugated anti-Rabbit IgG should be diluted in 1:50000 - 100000 as second antibody.
Comment:	Target Species of Antibody: Human
Restrictions:	For Research Use only

## Handling

Format:	Lyophilized
Reconstitution:	Distilled Water.
Concentration:	Lot specific
Buffer:	Lyophilized from PBS with 2 % sucrose
Handling Advice:	Avoid repeat freeze-thaw cycles.
Storage:	4 °C, -20 °C
Storage Comment:	Long term: -20°C, the use of 50% glycerol is recommended if storing aliquots in -20°C for long term use (up to 1 year)  Short term (less than 1 week): 4°C. Avoid freeze-thaw cycles.



#### Immunohistochemistry (Paraffin-embedded Sections)

**Image 1.** Human Kidney: Formalin-Fixed, Paraffin-Embedded (FFPE). This image was taken for the unconjugated form of this product. Other forms have not been tested.