

Datasheet for ABIN6756650
anti-GNB1 antibody (N-Term)[Go to Product page](#)

1 Image

Overview

Quantity:	100 µL
Target:	GNB1
Binding Specificity:	N-Term
Reactivity:	Human, Mouse, Rat, Dog, Horse, Cow, Rabbit, Guinea Pig, Monkey, Bat
Host:	Rabbit
Clonality:	Polyclonal
Conjugate:	This GNB1 antibody is un-conjugated
Application:	Western Blotting (WB), Immunohistochemistry (IHC), Immunohistochemistry (Paraffin-embedded Sections) (IHC (p))

Product Details

Brand:	IHC-plus™
Immunogen:	Synthetic peptide from N-Terminus of human GNB1 (P62873, NP_002065). Percent identity by BLAST analysis: Human, Chimpanzee, Gorilla, Orangutan, Gibbon, Monkey, Galago, Marmoset, Mouse, Rat, Elephant, Panda, Dog, Bovine, Bat, Rabbit, Horse, Guinea pig (100%), Opossum, Zebra finch, Chicken, Platypus, Xenopus, Catfish, Salmon, Pufferfish, Zebrafish (92%), Hamster, Stickleback (85%). Type of Immunogen: Synthetic peptide
Isotype:	IgG
Specificity:	Human GNB1

Product Details

Purification: Immunoaffinity purified

Target Details

Target: GNB1

Alternative Name: GNB1 ([GNB1 Products](#))

Background: Name/Gene ID: GNB1

Synonyms: GNB1, G protein, beta-1 subunit, Transducin beta chain 1

Gene ID: 2782

NCBI Accession: [NP_002065](#)

Pathways: [Myometrial Relaxation and Contraction](#), [Regulation of G-Protein Coupled Receptor Protein Signaling](#), [CXCR4-mediated Signaling Events](#), [Phototransduction](#), [Thromboxane A2 Receptor Signaling](#), [SARS-CoV-2 Protein Interactome](#)

Application Details

Application Notes: Approved: IHC, IHC-P (10 µg/mL), WB (0.2 - 1 µg/mL)

Usage: Western Blot: Suggested dilution at 1 µg/mL in 5 % skim milk / PBS buffer, and HRP conjugated anti-Rabbit IgG should be diluted in 1: 50,000 - 100,000 as second antibody. ELISA titer in peptide based assay: 1:1562500.

Comment: Target Species of Antibody: Human

Restrictions: For Research Use only

Handling

Format: Lyophilized

Reconstitution: Distilled water

Concentration: Lot specific

Buffer: Lyophilized from PBS with 2 % sucrose

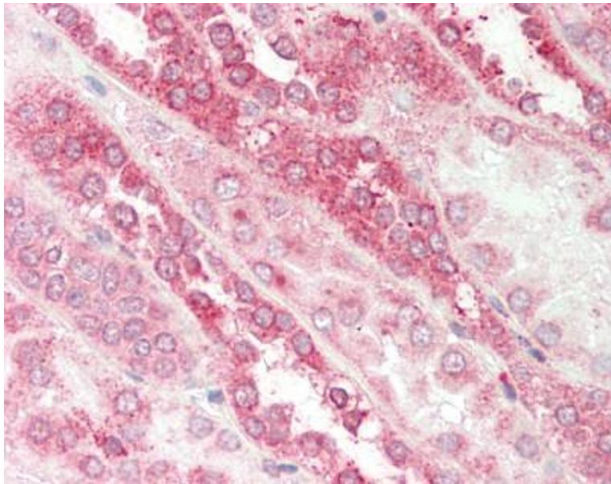
Handling Advice: Avoid repeat freeze-thaw cycles.

Storage: 4 °C, -20 °C

Handling

Storage Comment:	Long term: -20°C, the use of 50% glycerol is recommended if storing aliquots in -20°C for long term use (up to 1 year)
	Short term (less than 1 week): 4°C. Avoid freeze-thaw cycles.

Images



Immunohistochemistry (Paraffin-embedded Sections)

Image 1. Human Kidney: Formalin-Fixed, Paraffin-Embedded (FFPE). This image was taken for the unconjugated form of this product. Other forms have not been tested.