



[Go to Product page](#)

Datasheet for ABIN6756651
anti-PHGDH antibody (AA 254-303)

1 Image

Overview

Quantity:	100 µL
Target:	PHGDH
Binding Specificity:	AA 254-303
Reactivity:	Human, Mouse, Rat, Horse, Pig, Rabbit, Hamster, Bat
Host:	Rabbit
Clonality:	Polyclonal
Conjugate:	This PHGDH antibody is un-conjugated
Application:	Western Blotting (WB), Immunohistochemistry (IHC), Immunohistochemistry (Paraffin-embedded Sections) (IHC (p))

Product Details

Brand:	IHC-plus™
Immunogen:	Synthetic peptide located between aa254-303 of human PHGDH (O43175, NP_006614). Percent identity by BLAST analysis: Human, Chimpanzee, Gorilla, Orangutan, Gibbon, Monkey, Galago, Mouse, Rat, Hamster, Elephant, Panda, Bat, Rabbit, Horse, Pig (100%), Marmoset, Dog, Bovine, Guinea pig (92%), Xenopus (91%), Opossum (85%). Type of Immunogen: Synthetic peptide
Isotype:	IgG
Specificity:	Human PHGDH
Purification:	Immunoaffinity purified

Target Details

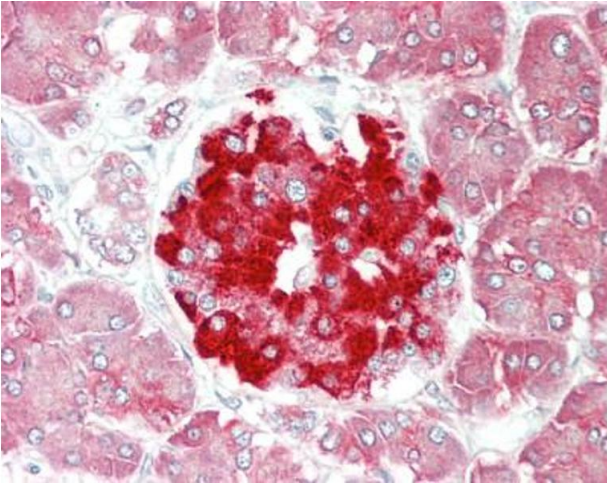
Target:	PHGDH
Alternative Name:	PHGDH (PHGDH Products)
Background:	Name/Gene ID: PHGDH Synonyms: PHGDH, 3-PGDH, 3PGDH, PGDH, Phosphoglycerate dehydrogenase, PDG, PGAD, PGDH3
Gene ID:	26227
NCBI Accession:	NP_006614
Pathways:	Metabolism of Steroid Hormones and Vitamin D, Warburg Effect

Application Details

Application Notes:	Approved: IHC, IHC-P (10 µg/mL), WB (0.2 - 1 µg/mL) Usage: ELISA titer using peptide based assay: 1:62500. Western Blot: Suggested dilution at 1 µg/mL in 5 % skim milk / PBS buffer, and HRP conjugated anti-Rabbit IgG should be diluted in 1:50000 - 100000 as second antibody.
Comment:	Target Species of Antibody: Human
Restrictions:	For Research Use only

Handling

Format:	Lyophilized
Reconstitution:	Distilled Water.
Concentration:	Lot specific
Buffer:	Lyophilized from PBS with 2 % sucrose
Handling Advice:	Avoid repeat freeze-thaw cycles.
Storage:	4 °C,-20 °C
Storage Comment:	Long term: -20°C, the use of 50% glycerol is recommended if storing aliquots in -20°C for long term use (up to 1 year) Short term (less than 1 week): 4°C. Avoid freeze-thaw cycles.



Immunohistochemistry (Paraffin-embedded Sections)

Image 1. Human Pancreas: Formalin-Fixed, Paraffin-Embedded (FFPE). This image was taken for the unconjugated form of this product. Other forms have not been tested.