



[Go to Product page](#)

Datasheet for ABIN6756653
anti-TXN2 antibody (C-Term)

1 Image

Overview

Quantity:	100 µL
Target:	TXN2
Binding Specificity:	C-Term
Reactivity:	Human, Rat, Mouse, Cow, Guinea Pig, Horse, Dog, Bat, Chicken, Monkey, Pig
Host:	Rabbit
Clonality:	Polyclonal
Conjugate:	This TXN2 antibody is un-conjugated
Application:	Western Blotting (WB), Immunohistochemistry (IHC), Immunohistochemistry (Paraffin-embedded Sections) (IHC (p))

Product Details

Brand:	IHC-plus™
Immunogen:	Synthetic peptide from C-Terminus of human TXN2 (Q99757, NP_036605). Percent identity by BLAST analysis: Human, Chimpanzee, Gorilla, Monkey, Galago, Mouse, Rat, Elephant, Dog, Bovine, Bat, Horse, Pig, Opossum, Guinea pig, Zebra finch, Chicken, Lizard (100%), Rabbit, Platypus, Xenopus (92%), Zebrafish (84%). Type of Immunogen: Synthetic peptide
Specificity:	Human TXN2 / Thioredoxin 2
Purification:	Immunoaffinity purified

Target Details

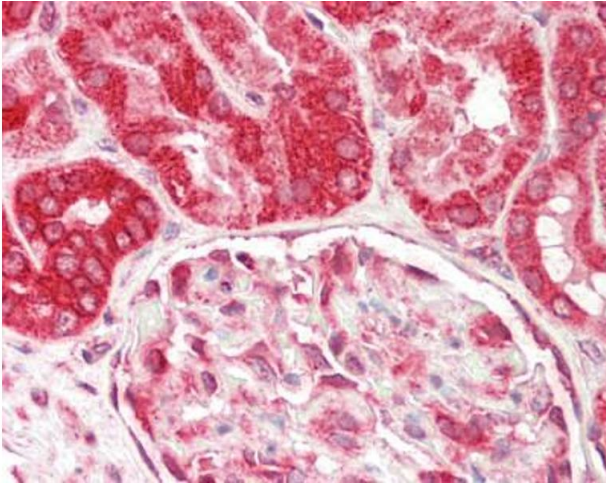
Target:	TXN2
Alternative Name:	TXN2 / Thioredoxin 2 (TXN2 Products)
Background:	Name/Gene ID: TXN2 Synonyms: TXN2, MT-TRX, MTRX, Thioredoxin, Thioredoxin, mitochondrial, Thioredoxin-2, Mitochondrial thioredoxin, Thioredoxin 2, TRX2
Gene ID:	25828
NCBI Accession:	NP_036605
Pathways:	Cell RedoxHomeostasis

Application Details

Application Notes:	Approved: IHC, IHC-P (5 µg/mL), WB (0.2 - 1 µg/mL) Usage: Western Blot: Suggested dilution at 1 µg/mL in 5 % skim milk / PBS buffer, and HRP conjugated anti-Rabbit IgG should be diluted in 1: 50,000 - 100,000 as secondary antibody.
Comment:	Target Species of Antibody: Human
Restrictions:	For Research Use only

Handling

Format:	Lyophilized
Reconstitution:	Distilled water
Concentration:	Lot specific
Buffer:	Lyophilized from PBS with 2 % sucrose
Handling Advice:	Avoid repeat freeze-thaw cycles.
Storage:	4 °C, -20 °C
Storage Comment:	Long term: -20°C, the use of 50% glycerol is recommended if storing aliquots in -20°C for long term use (up to 1 year) Short term (less than 1 week): 4°C. Avoid freeze-thaw cycles.



Immunohistochemistry (Paraffin-embedded Sections)

Image 1. Human Kidney: Formalin-Fixed, Paraffin-Embedded (FFPE). This image was taken for the unconjugated form of this product. Other forms have not been tested.