

Datasheet for ABIN6756655
anti-HSPA2 antibody (AA 504-553)[Go to Product page](#)

1 Image

Overview

Quantity:	100 µL
Target:	HSPA2
Binding Specificity:	AA 504-553
Reactivity:	Human, Rat, Mouse, Cow, Goat, Pig, Dog, Rabbit, Hamster
Host:	Rabbit
Clonality:	Polyclonal
Conjugate:	This HSPA2 antibody is un-conjugated
Application:	Western Blotting (WB), Immunohistochemistry (IHC), Immunohistochemistry (Paraffin-embedded Sections) (IHC (p))

Product Details

Brand:	IHC-plus™
Immunogen:	Synthetic peptide located between aa504-553 of human HSPA2 (P54652, NP_068814). Percent identity by BLAST analysis: Human, Chimpanzee, Orangutan, Gibbon, Galago, Marmoset, Mouse, Rat, Goat, Hamster, Panda, Dog, Bovine, Rabbit, Pig, Opossum, Platypus (100%), Monkey, Grape, Arabidopsis (90%), Turkey, Zebra finch, Chicken, Lizard (85%). Type of Immunogen: Synthetic peptide
Isotype:	IgG
Specificity:	Human HSPA2
Purification:	Immunoaffinity purified

Target Details

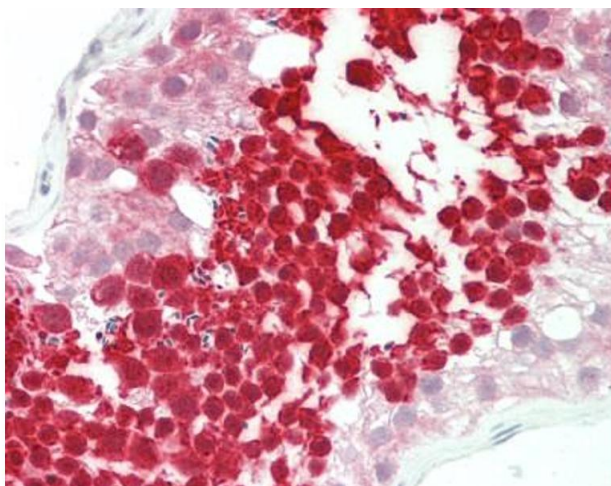
Target:	HSPA2
Alternative Name:	HSPA2 (HSPA2 Products)
Background:	Name/Gene ID: HSPA2 Synonyms: HSPA2, Heat shock 70kD protein 2, HSP70-2, HSP70-3, Heat shock 70 kDa protein 2, Heat shock 70 kDa protein 2
Gene ID:	3306
NCBI Accession:	NP_068814

Application Details

Application Notes:	Approved: IHC, IHC-P (10 µg/mL), WB (0.2 - 1 µg/mL) Usage: Western Blot: Suggested dilution at 1 µg/mL in 5 % skim milk / PBS buffer, and HRP conjugated anti-Rabbit IgG should be diluted in 1: 50,000 - 100,000 as second antibody. ELISA titer in peptide based assay: 1:62500.
Comment:	Target Species of Antibody: Human
Restrictions:	For Research Use only

Handling

Format:	Lyophilized
Reconstitution:	Distilled water
Concentration:	Lot specific
Buffer:	Lyophilized from PBS with 2 % sucrose
Handling Advice:	Avoid repeat freeze-thaw cycles.
Storage:	4 °C, -20 °C
Storage Comment:	Long term: -20°C, the use of 50% glycerol is recommended if storing aliquots in -20°C for long term use (up to 1 year) Short term (less than 1 week): 4°C. Avoid freeze-thaw cycles.



Immunohistochemistry (Paraffin-embedded Sections)

Image 1. Human Testis: Formalin-Fixed, Paraffin-Embedded (FFPE). This image was taken for the unconjugated form of this product. Other forms have not been tested.