

Datasheet for ABIN6756656 anti-PEPD antibody (AA 359-408)



[Go to Product page](#)

1 Image

1 Publication

Overview

Quantity:	100 µL
Target:	PEPD
Binding Specificity:	AA 359-408
Reactivity:	Human, Mouse, Rat, Dog, Guinea Pig, Horse, Pig, Bat
Host:	Rabbit
Clonality:	Polyclonal
Conjugate:	This PEPD antibody is un-conjugated
Application:	Western Blotting (WB), Immunohistochemistry (IHC), Immunohistochemistry (Paraffin-embedded Sections) (IHC (p))

Product Details

Brand:	IHC-plus™
Immunogen:	Synthetic peptide located between aa359-408 of human PEPD (P12955, NP_000276). Percent identity by BLAST analysis: Human, Chimpanzee, Gorilla, Orangutan, Gibbon, Marmoset, Mouse, Rat, Dog, Bat, Horse, Pig, Opossum, Guinea pig, Stickleback (100%), Monkey, Galago, Rabbit, Turkey, Chicken (92%), Bovine (91%), Zebrafish (85%), Elephant (84%). Type of Immunogen: Synthetic peptide
Isotype:	IgG
Specificity:	Human PEPD
Purification:	Immunoaffinity purified

Target Details

Target:	PEPD
Alternative Name:	PEPD / PROLIDASE (PEPD Products)
Background:	Name/Gene ID: PEPD Subfamily: Metallopeptidase M24B Family: Exopeptidase Synonyms: PEPD, Aminoacyl-L-proline hydrolase, Imidodipeptidase, PRD, PROLIDASE, X-Pro dipeptidase, Xaa-Pro dipeptidase, Peptidase D, Proline dipeptidase
Gene ID:	5184
NCBI Accession:	NP_000276

Application Details

Application Notes:	Approved: IHC, IHC-P (10 µg/mL), WB (0.2 - 1 µg/mL) Usage: Western Blot: Suggested dilution at 1 µg/mL in 5 % skim milk / PBS buffer, and HRP conjugated anti-Rabbit IgG should be diluted in 1: 50,000 - 100,000 as second antibody. ELISA titer in peptide based assay: 1:312500.
Comment:	Target Species of Antibody: Human
Restrictions:	For Research Use only

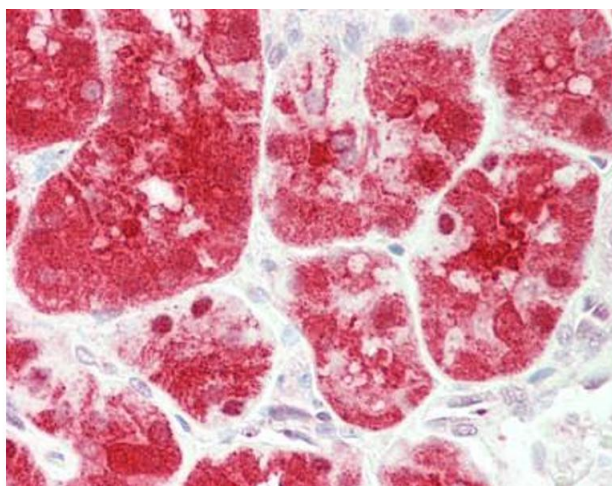
Handling

Format:	Lyophilized
Reconstitution:	Distilled water
Concentration:	Lot specific
Buffer:	Lyophilized from PBS with 2 % sucrose
Handling Advice:	Avoid repeat freeze-thaw cycles.
Storage:	4 °C,-20 °C
Storage Comment:	Long term: -20°C, the use of 50% glycerol is recommended if storing aliquots in -20°C for long term use (up to 1 year) Short term (less than 1 week): 4°C. Avoid freeze-thaw cycles.

Publications

Product cited in: Rešetar Maslov, Farkaš, Rubić, Kuleš, Beletić, Beer Ljubić, Šmit, Mrljak, Torti: "Serum Proteomic Profiles Reflect the Stages of Myxomatous Mitral Valve Disease in Dogs." in: **International journal of molecular sciences**, Vol. 24, Issue 8, (2023) ([PubMed](#)).

Images



Immunohistochemistry (Paraffin-embedded Sections)

Image 1. Human Kidney: Formalin-Fixed, Paraffin-Embedded (FFPE). This image was taken for the unconjugated form of this product. Other forms have not been tested.