

Datasheet for ABIN6756658  
**anti-VPS29 antibody (AA 35-84)**[Go to Product page](#)

## 1 Image

## Overview

|                      |  |
|----------------------|--|
| Quantity:            | 100 µL   |
| Target:              | VPS29  |
| Binding Specificity: | AA 35-84   |
| Reactivity:          | Human, Mouse, Dog, Cow, Horse, Rabbit, Zebrafish (Danio rerio), Chicken, Guinea Pig, Bat, Hamster, Monkey, Pig, Xenopus laevis |
| Host:                | Rabbit   |
| Clonality:           | Polyclonal   |
| Conjugate:           | This VPS29 antibody is un-conjugated   |
| Application:         | Western Blotting (WB), Immunohistochemistry (IHC), Immunohistochemistry (Paraffin-embedded Sections) (IHC (p))                 |

## Product Details

|            |   |
|------------|---|
| Brand:     | IHC-plus™   |
| Immunogen: | Synthetic peptide located between aa35-84 of human VPS29 (Q9UBQ0, NP_057310). Percent identity by BLAST analysis: Human, Chimpanzee, Orangutan, Gibbon, Monkey, Galago, Marmoset, Mouse, Hamster, Dog, Bovine, Bat, Rabbit, Horse, Pig, Opossum, Guinea pig, Zebra finch, Chicken, Platypus, Xenopus, Frog, Trout, Catfish, Salmon, Stickleback, Zebrafish (100%), Rat, Sea squirt, Drosophila, Beetle (92%).<br><br>Type of Immunogen: Synthetic peptide |
| Isotype:   | IgG   |

## Product Details

|               |                         |
|---------------|-------------------------|
| Specificity:  | Human VPS29             |
| Purification: | Immunoaffinity purified |

## Target Details

|                   |   |
|-------------------|---|
| Target:           | VPS29   |
| Alternative Name: | VPS29 ( <a href="#">VPS29 Products</a> )  |
| Background:       | Name/Gene ID: VPS29<br><br>Synonyms: VPS29, DC7, DC15, HVPS29, PEP11, Retromer protein, Vesicle protein sorting 29, X 007 protein, Vacuolar protein sorting 29, PEP11 homolog |
| Gene ID:          | 51699   |
| NCBI Accession:   | <a href="#">NP_057310</a>   |

## Application Details

|                    |  |
|--------------------|--|
| Application Notes: | Approved: IHC, IHC-P (10 µg/mL), WB (0.2 - 1 µg/mL)<br><br>Usage: Western Blot: Suggested dilution at 1.0 µg/mL in 5 % skim milk / PBS buffer, and HRP conjugated anti-Rabbit IgG should be diluted in 1: 50,000 - 100,000 as second antibody. ELISA titer in peptide based assay: 1:312500. |
| Comment:           | Target Species of Antibody: Human  |
| Restrictions:      | For Research Use only  |

## Handling

|                  |  |
|------------------|--|
| Format:          | Lyophilized  |
| Reconstitution:  | Distilled water  |
| Concentration:   | Lot specific   |
| Buffer:          | Lyophilized from PBS with 2 % sucrose  |
| Handling Advice: | Avoid repeat freeze-thaw cycles.   |
| Storage:         | 4 °C, -20 °C   |
| Storage Comment: | Long term: -20°C, the use of 50% glycerol is recommended if storing aliquots in -20°C for long |

## Handling

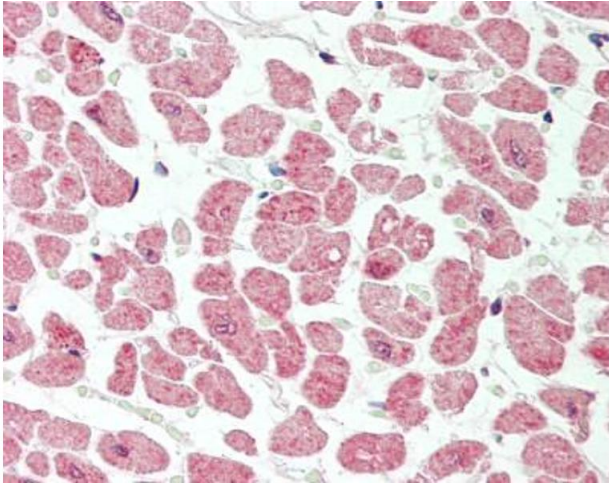
---

term use (up to 1 year)

Short term (less than 1 week): 4°C. Avoid freeze-thaw cycles.

## Images

---



### Immunohistochemistry (Paraffin-embedded Sections)

**Image 1.** Human Heart: Formalin-Fixed, Paraffin-Embedded (FFPE). This image was taken for the unconjugated form of this product. Other forms have not been tested.