

Datasheet for ABIN6756664  
**anti-SPINT1 antibody (AA 168-217)**[Go to Product page](#)

## 1 Image

## Overview

Quantity:	100 µL
Target:	SPINT1
Binding Specificity:	AA 168-217
Reactivity:	Human, Monkey
Host:	Rabbit
Clonality:	Polyclonal
Conjugate:	This SPINT1 antibody is un-conjugated
Application:	Western Blotting (WB), Immunohistochemistry (IHC), Immunohistochemistry (Paraffin-embedded Sections) (IHC (p))

## Product Details

Brand:	IHC-plus™
Immunogen:	Synthetic peptide located between aa168-217 of human SPINT1 (O43278-2, NP_001027539). Percent identity by BLAST analysis: Human, Chimpanzee, Gorilla, Gibbon, Monkey, Marmoset (100%), Bat (92%).  Type of Immunogen: Synthetic peptide
Specificity:	Human SPINT1
Purification:	Immunoaffinity purified

### Target Details

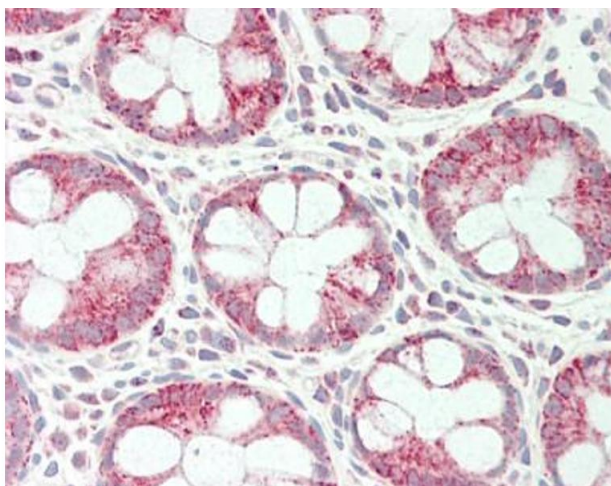
Target:	SPINT1
Alternative Name:	SPINT1 / HAI-1 ( <a href="#">SPINT1 Products</a> )
Background:	Name/Gene ID: SPINT1 Family: Serine Protease Inhibitor  Synonyms: SPINT1, HAI1, MANSC2, HAI, HAI-1
Gene ID:	6692
NCBI Accession:	<a href="#">NP_001027539</a>

### Application Details

Application Notes:	Approved: IHC, IHC-P (10 µg/mL), WB (1 µg/mL)
Comment:	Target Species of Antibody: Human
Restrictions:	For Research Use only

### Handling

Format:	Lyophilized
Reconstitution:	Distilled water
Concentration:	Lot specific
Buffer:	Lyophilized from PBS with 2 % sucrose
Handling Advice:	Avoid repeat freeze-thaw cycles.
Storage:	4 °C,-20 °C
Storage Comment:	Long term: -20°C, the use of 50% glycerol is recommended if storing aliquots in -20°C for long term use (up to 1 year) Short term (less than 1 week): 4°C. Avoid freeze-thaw cycles.



#### Immunohistochemistry (Paraffin-embedded Sections)

**Image 1.** Human Colon: Formalin-Fixed, Paraffin-Embedded (FFPE). This image was taken for the unconjugated form of this product. Other forms have not been tested.