

Datasheet for ABIN6756665
anti-UCHL3 antibody (C-Term)[Go to Product page](#)

1 Image

Overview

Quantity:	100 µL
Target:	UCHL3 (Uchl3)
Binding Specificity:	C-Term
Reactivity:	Human, Rat, Mouse, Cow, Horse, Dog, Rabbit, Guinea Pig, Pig, Monkey
Host:	Rabbit
Clonality:	Polyclonal
Conjugate:	This UCHL3 antibody is un-conjugated
Application:	Western Blotting (WB), Immunohistochemistry (IHC), Immunohistochemistry (Paraffin-embedded Sections) (IHC (p))

Product Details

Brand:	IHC-plus™
Immunogen:	Synthetic peptide from C-Terminus of human UCHL3 (P15374, NP_005993). Percent identity by BLAST analysis: Human, Chimpanzee, Gorilla, Gibbon, Monkey, Galago, Mouse, Rat, Elephant, Panda, Dog, Bovine, Rabbit, Horse, Pig, Guinea pig, Lizard (100%), Opossum, Turkey, Chicken, Platypus (92%), Xenopus (91%), Zebrafish, Drosophila (84%), Stickleback (81%). Type of Immunogen: Synthetic peptide
Specificity:	Human UCHL3
Purification:	Immunoaffinity purified

Target Details

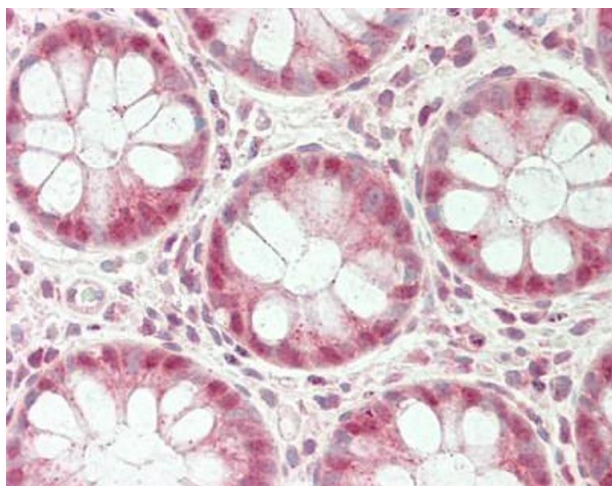
Target:	UCHL3 (Uchl3)
Alternative Name:	UCHL3 (Uchl3 Products)
Background:	Name/Gene ID: UCHL3 Subfamily: Cysteine C12 Family: Protease Synonyms: UCHL3, Ubiquitin thiolesterase, Ubiquitin thioesterase L3, UCH-L3
Gene ID:	7347
NCBI Accession:	NP_005993
Pathways:	Feeding Behaviour , Positive Regulation of fat Cell Differentiation

Application Details

Application Notes:	Approved: IHC, IHC-P (10 µg/mL), WB (0.2 - 1 µg/mL) Usage: Western Blot: Suggested dilution at 1 µg/mL in 5 % skim milk / PBS buffer, and HRP conjugated anti-Rabbit IgG should be diluted in 1: 50,000 - 100,000 as secondary antibody.
Comment:	Target Species of Antibody: Human
Restrictions:	For Research Use only

Handling

Format:	Lyophilized
Reconstitution:	Distilled water
Concentration:	Lot specific
Buffer:	Lyophilized from PBS with 2 % sucrose
Handling Advice:	Avoid repeat freeze-thaw cycles.
Storage:	4 °C,-20 °C
Storage Comment:	Long term: -20°C, the use of 50% glycerol is recommended if storing aliquots in -20°C for long term use (up to 1 year) Short term (less than 1 week): 4°C. Avoid freeze-thaw cycles.



Immunohistochemistry (Paraffin-embedded Sections)

Image 1. Human Colon: Formalin-Fixed, Paraffin-Embedded (FFPE). This image was taken for the unconjugated form of this product. Other forms have not been tested.