



[Go to Product page](#)

Datasheet for ABIN6756666
anti-USP2 antibody (AA 371-420)

1 Image

Overview

Quantity:	100 µL
Target:	USP2
Binding Specificity:	AA 371-420
Reactivity:	Human, Dog, Horse, Rabbit, Monkey
Host:	Rabbit
Clonality:	Polyclonal
Conjugate:	This USP2 antibody is un-conjugated
Application:	Western Blotting (WB), Immunohistochemistry (IHC), Immunohistochemistry (Paraffin-embedded Sections) (IHC (p))

Product Details

Brand:	IHC-plus™
Immunogen:	Synthetic peptide located between aa371-420 of human USP2 (O75604, NP_004196). Percent identity by BLAST analysis: Human, Chimpanzee, Gorilla, Gibbon, Monkey, Galago, Marmoset, Panda, Dog, Rabbit, Horse, Opossum (100%), Elephant, Bovine (92%), Pig, Guinea pig, Platypus (85%), Mouse, Rat (78%). Type of Immunogen: Synthetic peptide
Specificity:	Human USP2
Purification:	Immunoaffinity purified

Target Details

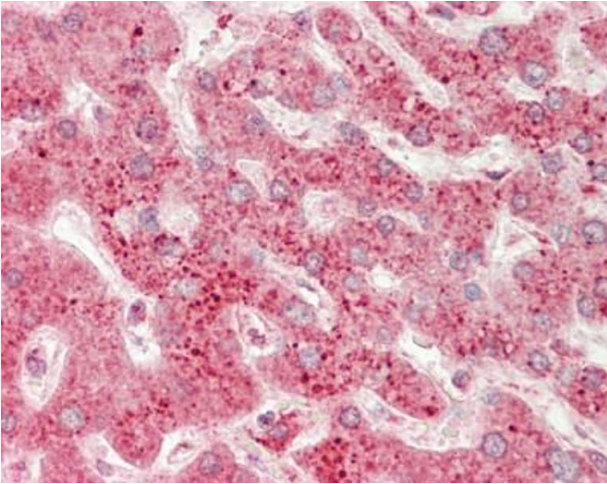
Target:	USP2
Alternative Name:	USP2 (USP2 Products)
Background:	Name/Gene ID: USP2 Subfamily: Cysteine C19 Family: Protease Synonyms: USP2, Deubiquitinating enzyme 2, Ubiquitin specific peptidase 2, Ubiquitin specific protease 9, USP9, Ubiquitin specific protease 12, Ubiquitin specific protease 2, Ubiquitin thioesterase 2, UBP41
Gene ID:	9099
NCBI Accession:	NP_004196

Application Details

Application Notes:	Approved: IHC, IHC-P (10 µg/mL), WB (0.2 - 1 µg/mL) Usage: Western Blot: Suggested dilution at 1 µg/mL in 5 % skim milk / PBS buffer, and HRP conjugated anti-Rabbit IgG should be diluted in 1: 50,000 - 100,000 as secondary antibody.
Comment:	Target Species of Antibody: Human
Restrictions:	For Research Use only

Handling

Format:	Lyophilized
Reconstitution:	Distilled water
Concentration:	Lot specific
Buffer:	Lyophilized from PBS with 2 % sucrose
Handling Advice:	Avoid repeat freeze-thaw cycles.
Storage:	4 °C, -20 °C
Storage Comment:	Long term: -20°C, the use of 50% glycerol is recommended if storing aliquots in -20°C for long term use (up to 1 year) Short term (less than 1 week): 4°C. Avoid freeze-thaw cycles.



Immunohistochemistry (Paraffin-embedded Sections)

Image 1. Human Liver: Formalin-Fixed, Paraffin-Embedded (FFPE). This image was taken for the unconjugated form of this product. Other forms have not been tested.