



[Go to Product page](#)

Datasheet for ABIN6756667  
**anti-MGST3 antibody (AA 25-74)**

1 Image

### Overview

Quantity:	100 µL
Target:	MGST3
Binding Specificity:	AA 25-74
Reactivity:	Human, Cow, Hamster
Host:	Rabbit
Clonality:	Polyclonal
Conjugate:	This MGST3 antibody is un-conjugated
Application:	Immunohistochemistry (IHC), Western Blotting (WB), Immunohistochemistry (Paraffin-embedded Sections) (IHC (p))

### Product Details

Brand:	IHC-plus™
Immunogen:	Synthetic peptide located between aa25-74 of human MGST3 (O14880, NP_004519). Percent identity by BLAST analysis: Human, Chimpanzee, Gorilla, Gibbon, Hamster, Bovine (100%), Monkey, Galago, Marmoset, Mouse, Rat, Elephant, Dog, Bat, Rabbit, Horse, Pig, Opossum, Guinea pig, Turkey, Platypus, Catfish (92%), Zebra finch, Chicken, Xenopus (85%).  Type of Immunogen: Synthetic peptide
Specificity:	Human MGST3
Purification:	Immunoaffinity purified

## Target Details

---

Target:	MGST3
Alternative Name:	MGST3 ( <a href="#">MGST3 Products</a> )
Background:	Name/Gene ID: MGST3  Synonyms: MGST3, GST-III, Microsomal GST-3, Microsomal GST-III
Gene ID:	4259
NCBI Accession:	<a href="#">NP_004519</a>

## Application Details

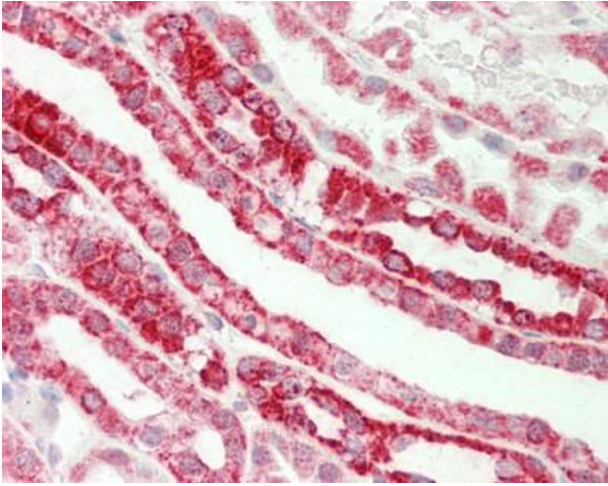
---

Application Notes:	Approved: IHC, IHC-P (10 µg/mL), WB (0.2 - 1 µg/mL)  Usage: Western Blot: Suggested dilution at 1 µg/mL in 5 % skim milk / PBS buffer, and HRP conjugated anti-Rabbit IgG should be diluted in 1: 50,000 - 100,000 as secondary antibody.
Comment:	Target Species of Antibody: Human
Restrictions:	For Research Use only

## Handling

---

Format:	Lyophilized
Reconstitution:	Distilled water
Concentration:	Lot specific
Buffer:	Lyophilized from PBS with 2 % sucrose
Handling Advice:	Avoid repeat freeze-thaw cycles.
Storage:	4 °C,-20 °C
Storage Comment:	Long term: -20°C, the use of 50% glycerol is recommended if storing aliquots in -20°C for long term use (up to 1 year)  Short term (less than 1 week): 4°C. Avoid freeze-thaw cycles.



#### Immunohistochemistry (Paraffin-embedded Sections)

**Image 1.** Human Kidney: Formalin-Fixed, Paraffin-Embedded (FFPE). This image was taken for the unconjugated form of this product. Other forms have not been tested.