

Datasheet for ABIN6756669

## anti-Vitamin D-Binding Protein antibody (AA 127-176)



[Go to Product page](#)

### 1 Image

#### Overview

Quantity:	100 µL
Target:	Vitamin D-Binding Protein (GC)
Binding Specificity:	AA 127-176
Reactivity:	Human
Host:	Rabbit
Clonality:	Polyclonal
Conjugate:	This Vitamin D-Binding Protein antibody is un-conjugated
Application:	Western Blotting (WB), Immunohistochemistry (IHC), Immunohistochemistry (Paraffin-embedded Sections) (IHC (p))

#### Product Details

Brand:	IHC-plus™
Immunogen:	Synthetic peptide located between aa127-176 of human GC (P02774, NP_000574). Percent identity by BLAST analysis: Human, Chimpanzee, Gorilla, Gibbon (100%), Bat (92%), Marmoset (85%), Rat (78%).  Type of Immunogen: Synthetic peptide
Specificity:	Human GC / VDBP
Purification:	Immunoaffinity purified

## Target Details

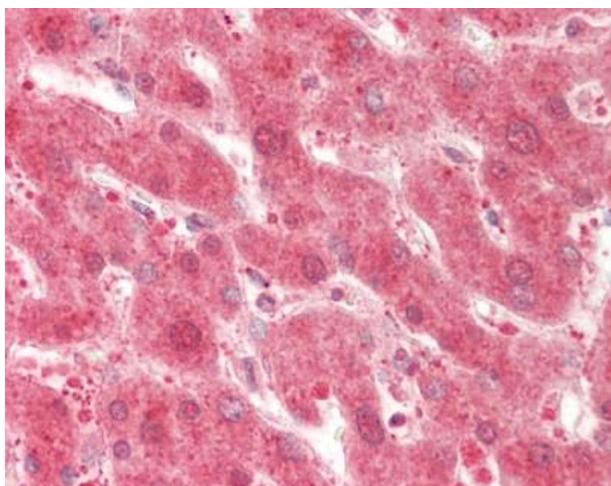
Target:	Vitamin D-Binding Protein (GC)
Alternative Name:	GC / Vitamin D-Binding Protein ( <a href="#">GC Products</a> )
Background:	Name/Gene ID: GC  Synonyms: GC, Gc-globulin, HDBP, Group-specific component, GRD3, VDB, VDBG, VDBP, Vitamin D-binding protein
Gene ID:	2638
NCBI Accession:	<a href="#">NP_000574</a>
Pathways:	<a href="#">Metabolism of Steroid Hormones and Vitamin D, Monocarboxylic Acid Catabolic Process</a>

## Application Details

Application Notes:	Approved: IHC, IHC-P (10 µg/mL), WB (1 µg/mL)  Usage: Western Blot: Suggested dilution at 1 µg/mL in 5 % skim milk / PBS buffer, and HRP conjugated anti-Rabbit IgG should be diluted in 1: 50,000 - 100,000 as secondary antibody.
Comment:	Target Species of Antibody: Human
Restrictions:	For Research Use only

## Handling

Format:	Lyophilized
Reconstitution:	Distilled water
Concentration:	Lot specific
Buffer:	Lyophilized from PBS with 2 % sucrose
Handling Advice:	Avoid repeat freeze-thaw cycles.
Storage:	4 °C, -20 °C
Storage Comment:	Long term: -20°C, the use of 50% glycerol is recommended if storing aliquots in -20°C for long term use (up to 1 year)  Short term (less than 1 week): 4°C. Avoid freeze-thaw cycles.



#### Immunohistochemistry (Paraffin-embedded Sections)

**Image 1.** Human Liver: Formalin-Fixed, Paraffin-Embedded (FFPE). This image was taken for the unconjugated form of this product. Other forms have not been tested.