

Datasheet for ABIN6756677
anti-CPVL antibody (AA 231-280)[Go to Product page](#)

1 Image

Overview

Quantity:	100 µL
Target:	CPVL
Binding Specificity:	AA 231-280
Reactivity:	Human
Host:	Rabbit
Clonality:	Polyclonal
Conjugate:	This CPVL antibody is un-conjugated
Application:	Western Blotting (WB), Immunohistochemistry (IHC), Immunohistochemistry (Paraffin-embedded Sections) (IHC (p))

Product Details

Brand:	IHC-plus™
Immunogen:	Synthetic peptide located between aa231-280 of human CPVL (Q9H3G5, NP_112601). Percent identity by BLAST analysis: Human, Gorilla, Orangutan, Gibbon, Monkey, Opossum (100%), Chimpanzee, Marmoset, Horse, Guinea pig (92%), Galago, Mouse, Panda, Bovine, Platypus (85%), Bat (83%). Type of Immunogen: Synthetic peptide
Specificity:	Human CPVL
Purification:	Immunoaffinity purified

Target Details

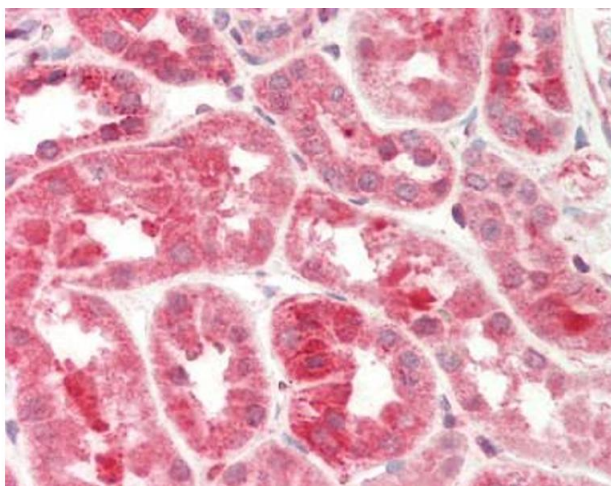
Target:	CPVL
Alternative Name:	CPVL (CPVL Products)
Background:	Name/Gene ID: CPVL Subfamily: Serine S10 Family: Exopeptidase Synonyms: CPVL, Carboxypeptidase WUG, CP-Mac carboxypeptidase, HVLP, VCP-like protein, VLP
Gene ID:	54504
NCBI Accession:	NP_112601

Application Details

Application Notes:	Approved: IHC, IHC-P (10 µg/mL), WB (1 µg/mL)
Comment:	Target Species of Antibody: Human
Restrictions:	For Research Use only

Handling

Format:	Lyophilized
Reconstitution:	Distilled water
Concentration:	Lot specific
Buffer:	Lyophilized from PBS with 2 % sucrose
Handling Advice:	Avoid repeat freeze-thaw cycles.
Storage:	4 °C,-20 °C
Storage Comment:	Long term: -20°C, the use of 50% glycerol is recommended if storing aliquots in -20°C for long term use (up to 1 year) Short term (less than 1 week): 4°C. Avoid freeze-thaw cycles.



Immunohistochemistry (Paraffin-embedded Sections)

Image 1. Human Kidney: Formalin-Fixed, Paraffin-Embedded (FFPE). This image was taken for the unconjugated form of this product. Other forms have not been tested.