

Datasheet for ABIN6756679  
**anti-BRDT antibody (N-Term)**[Go to Product page](#)

## 1 Image

## Overview

Quantity:	100 µL
Target:	BRDT
Binding Specificity:	N-Term
Reactivity:	Human, Guinea Pig, Monkey
Host:	Rabbit
Clonality:	Polyclonal
Conjugate:	This BRDT antibody is un-conjugated
Application:	Immunohistochemistry (IHC), Immunohistochemistry (Paraffin-embedded Sections) (IHC (p))

## Product Details

Brand:	IHC-plus™
Immunogen:	Synthetic peptide from N-Terminus of human BRDT (Q58F21, NP_001717). Percent identity by BLAST analysis: Human, Chimpanzee, Gibbon, Monkey, Marmoset, Elephant, Panda, Guinea pig (100%), Galago, Mouse, Dog, Rabbit, Opossum, Platypus (92%), Rat, Horse, Xenopus (85%).  Type of Immunogen: Synthetic peptide
Specificity:	Human BRDT
Purification:	Immunoaffinity purified

## Target Details

Target:	BRDT
---------	------

## Target Details

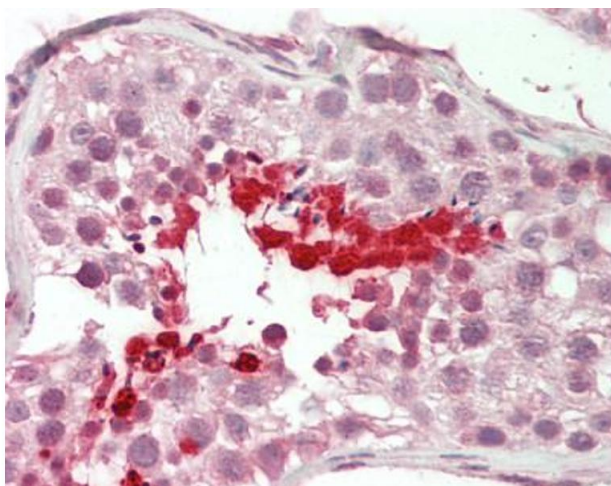
Alternative Name:	BRDT ( <a href="#">BRDT Products</a> )
Background:	Name/Gene ID: BRDT Subfamily: BRD Family: Protein Kinase  Synonyms: BRDT, Cancer/testis antigen 9, Fsr3, RING3-like protein, BRD6, Bromodomain, testis-specific, CT9, Testis-specific bromodomain
Gene ID:	676
NCBI Accession:	<a href="#">NP_001717</a>

## Application Details

Application Notes:	Approved: IHC, IHC-P (10 µg/mL)  Usage: Western Blot: Suggested dilution at 1 µg/mL in 5 % skim milk / PBS buffer, and HRP conjugated anti-Rabbit IgG should be diluted in 1: 50,000 - 100,000 as secondary antibody.
Comment:	Target Species of Antibody: Human
Restrictions:	For Research Use only

## Handling

Format:	Lyophilized
Reconstitution:	Distilled water
Concentration:	Lot specific
Buffer:	Lyophilized from PBS with 2 % sucrose
Handling Advice:	Avoid repeat freeze-thaw cycles.
Storage:	4 °C, -20 °C
Storage Comment:	Long term: -20°C, the use of 50% glycerol is recommended if storing aliquots in -20°C for long term use (up to 1 year) Short term (less than 1 week): 4°C. Avoid freeze-thaw cycles.



#### Immunohistochemistry (Paraffin-embedded Sections)

**Image 1.** Human Testis: Formalin-Fixed, Paraffin-Embedded (FFPE). This image was taken for the unconjugated form of this product. Other forms have not been tested.