



[Go to Product page](#)

Datasheet for ABIN6756680

anti-Ketohexokinase antibody (AA 71-120)

1 Image

Overview

Quantity:	100 µL
Target:	Ketohexokinase (KHK)
Binding Specificity:	AA 71-120
Reactivity:	Human
Host:	Rabbit
Clonality:	Polyclonal
Conjugate:	This Ketohexokinase antibody is un-conjugated
Application:	Western Blotting (WB), Immunohistochemistry (IHC), Immunohistochemistry (Paraffin-embedded Sections) (IHC (p))

Product Details

Brand:	IHC-plus™
Immunogen:	Synthetic peptide located between aa71-120 of human KHK (P50053, NP_006479). Type of Immunogen: Synthetic peptide
Isotype:	IgG
Specificity:	Human KHK / Ketohexokinase (Isoform C)
Purification:	Immunoaffinity purified

Target Details

Target:	Ketohexokinase (KHK)
---------	----------------------

Target Details

Alternative Name: KHK / Ketohexokinase ([KHK Products](#))

Background: Name/Gene ID: KHK

Synonyms: KHK, Ketohexokinase (fructokinase), Hepatic fructokinase, Ketohexokinase

Gene ID: 3795

NCBI Accession: [NP_006479](#)

Application Details

Application Notes: Approved: IHC, IHC-P (10 µg/mL), WB (0.2 - 1 µg/mL)

Usage: Western Blot: Suggested dilution at 1 µg/mL in 5 % skim milk / PBS buffer, and HRP conjugated anti-Rabbit IgG should be diluted in 1: 50,000 - 100,000 as second antibody. ELISA titer in peptide based assay: 1:312500.

Comment: Target Species of Antibody: Human

Restrictions: For Research Use only

Handling

Format: Lyophilized

Reconstitution: Distilled water

Concentration: Lot specific

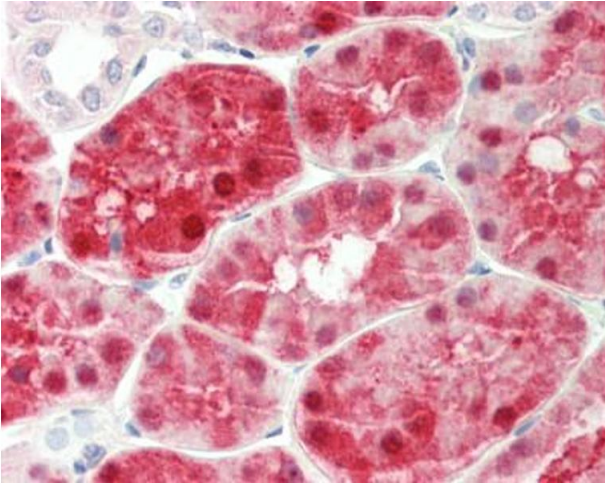
Buffer: Lyophilized from PBS with 2 % sucrose

Handling Advice: Avoid repeat freeze-thaw cycles.

Storage: 4 °C, -20 °C

Storage Comment: Long term: -20°C, the use of 50% glycerol is recommended if storing aliquots in -20°C for long term use (up to 1 year)

Short term (less than 1 week): 4°C. Avoid freeze-thaw cycles.



Immunohistochemistry (Paraffin-embedded Sections)

Image 1. Human Kidney: Formalin-Fixed, Paraffin-Embedded (FFPE). This image was taken for the unconjugated form of this product. Other forms have not been tested.