



Datasheet for ABIN6756692
anti-CTRP5 antibody (N-Term)



[Go to Product page](#)

1 Image

Overview

Quantity:	100 µL
Target:	CTRP5 (C1QTNF5)
Binding Specificity:	N-Term
Reactivity:	Human, Mouse
Host:	Rabbit
Clonality:	Polyclonal
Conjugate:	This CTRP5 antibody is un-conjugated
Application:	Western Blotting (WB), ELISA

Product Details

Immunogen:	Peptide close to the amino terminus of human CTRP5.
Purification:	Immunoaffinity purified

Target Details

Target:	CTRP5 (C1QTNF5)
Alternative Name:	C1QTNF5 / CTRP5 (C1QTNF5 Products)
Background:	Name/Gene ID: C1QTNF5 Synonyms: C1QTNF5, CTRP5, LORD
Gene ID:	114902

Target Details

UniProt: [Q9BXJ0](#)

Application Details

Application Notes: Approved: ELISA (1:50000 - 1:100000), WB

Comment: Target Species of Antibody: Human

Restrictions: For Research Use only

Handling

Format: Liquid

Concentration: Lot specific

Buffer: 20 mM Tris-HCl, pH 8.0, 10 mg/mL BSA, 0.05 % sodium azide

Preservative: Sodium azide

Precaution of Use: This product contains Sodium azide: a POISONOUS AND HAZARDOUS SUBSTANCE which should be handled by trained staff only.

Handling Advice: Aliquot to Avoid freeze/thaw cycles.

Storage: -20 °C

Storage Comment: Store at -20°C. Aliquot to avoid freeze/thaw cycles.

Images

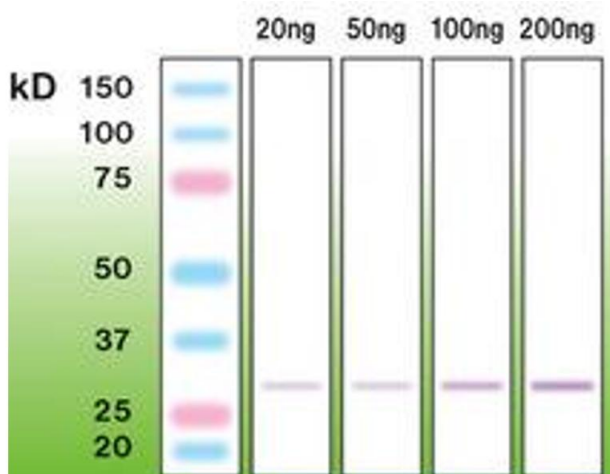


Image 1.