



Datasheet for ABIN6756694
anti-Trypsin antibody (C-Term)



[Go to Product page](#)

1 Image

Overview

Quantity:	100 µL
Target:	Trypsin
Binding Specificity:	C-Term
Reactivity:	Human
Host:	Rabbit
Clonality:	Polyclonal
Conjugate:	This Trypsin antibody is un-conjugated
Application:	ELISA, Western Blotting (WB), Immunoprecipitation (IP)

Product Details

Immunogen:	Peptide derived from near the C terminus of human pancreatic cationic trypsin.
Purification:	Immunoaffinity purified

Target Details

Target:	Trypsin
Abstract:	Trypsin Products

Application Details

Application Notes:	Approved: ELISA (1:10000 - 1:20000), IP, WB
Comment:	Target Species of Antibody: Human

Application Details

Restrictions: For Research Use only

Handling

Format: Liquid

Concentration: Lot specific

Buffer: 20 mM Tris-HCl, pH 8.0, 10 mg/mL BSA, 0.05 % sodium azide

Preservative: Sodium azide

Precaution of Use: This product contains Sodium azide: a POISONOUS AND HAZARDOUS SUBSTANCE which should be handled by trained staff only.

Handling Advice: Aliquot to Avoid freeze/thaw cycles.

Storage: -20 °C

Storage Comment: Store at -20°C. Aliquot to avoid freeze/thaw cycles.

Images

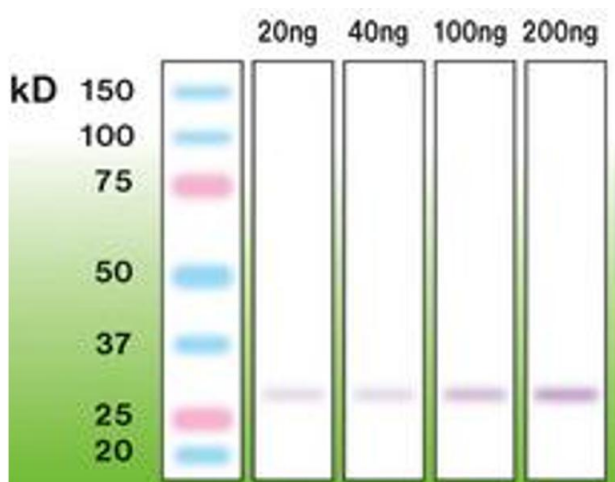


Image 1.